

# XUM6ANSBL5

## PHOTOELECTRIC SENSOR MINIATURE DIFFUSE SN 500MM NPN CABLE 5M

Product Life Status :

COMMERCIALIZED

TODAY  
FEB 22, 2021



End of Commercialization  
JUN 03, 2021



### Main

|                               |                             |
|-------------------------------|-----------------------------|
| Range of product              | OsiSense XU                 |
| Series name                   | General purpose single mode |
| Electronic sensor type        | Photo-electric sensor       |
| Sensor name                   | XUM                         |
| Sensor design                 | Miniature                   |
| Detection system              | Diffuse                     |
| Material                      | Plastic                     |
| Type of output signal         | Discrete                    |
| Supply circuit type           | DC                          |
| Wiring technique              | 3-wire                      |
| Discrete output type          | NPN                         |
| Discrete output function      | 1 NO or 1 NC programmable   |
| Electrical connection         | Cable                       |
| Cable length                  | 5 m                         |
| Emission                      | Red LED diffuse             |
| [Sn] nominal sensing distance | 0.5 m                       |

Product Life Status :

COMMERCIALIZED

FEB 22, 2021



End of Commercialization  
JUN 03, 2021

### Complementary

|                           |  |
|---------------------------|--|
| Enclosure material        | PBT  |
| Lens material             | Modified polyarylate                                     |
| Output type               | Solid state  |
| Wire insulation material  | PVC  |
| Status LED                | Stability: 1 LED (green)<br>Output state: 1 LED (orange) |
| [Us] rated supply voltage | 12...24 V DC with reverse polarity protection            |
| Supply voltage limits     | 10.2...26.4 V DC   |
| Switching capacity in mA  | <= 100 mA with overload and short-circuit protection     |
| Switching frequency       | <= 500 Hz  |
| Maximum voltage drop      | <2 V   |
| Current consumption       | 14 mA no-load  |
| Maximum delay first up    | 100 ms   |
| Maximum delay response    | 1 ms   |
| Maximum delay recovery    | 1 ms   |

|            |                                      |
|------------|--------------------------------------|
| Setting-up | Sensitivity adjustment by pushbutton |
| Depth      | 20 mm                                |
| Height     | 34 mm                                |
| Width      | 11 mm                                |
| Net weight | 0.1 kg                               |




## Environment

|                                       |  |
|---------------------------------------|--|
| Product certifications                | UL<br>RCM<br>CE  |
| Ambient air temperature for operation | -30...55 °C  |
| Ambient air temperature for storage   | -40...70 °C  |
| Vibration resistance                  | +/- 1.5 mm (f = 10...55 Hz) 2 hours in each direction X, Y and Z conforming to IEC 60068-2-6             |
| Shock resistance                      | 500 m/s <sup>2</sup> for X, Y, Z directions for 10 cycles (approx. 100 min) conforming to IEC 60068-2-27 |
| IP degree of protection               | IP67 conforming to IEC 60529   |

## Packing Units

|                  |            |
|------------------|------------|
| Package 1 Weight | 99.000 g   |
| Package 1 Height | 160.000 mm |
| Package 1 width  | 40.000 mm  |
| Package 1 Length | 110.000 mm |

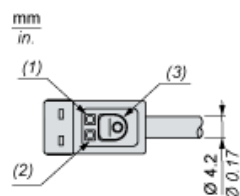
## Offer Sustainability

|                            |   |
|----------------------------|---|
| REACH Regulation           |  <a href="#">REACH Declaration</a>              |
| EU RoHS Directive          | Compliant  <a href="#">EU RoHS Declaration</a> |
| Mercury free               | Yes   |
| RoHS exemption information |  <a href="#">Yes</a>                           |

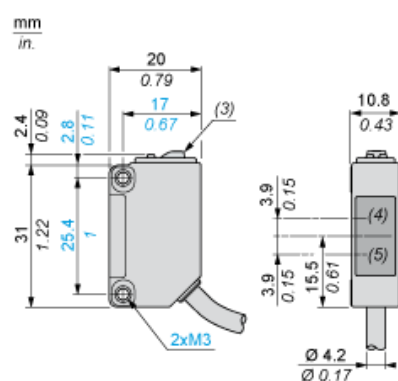
## Dimensions

### Pre-cable Version

#### Description



#### Dimensions



- (1) Output indicator (orange)
- (2) Stability indicator (green)
- (3) Setting pushbutton
- (4) Reception
- (5) Transmission

---

## Connections and Schema

---

### Pre-cabled

(-) : BU (Blue)

(+) : BN (Brown)

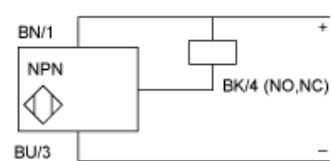
OUT/Output : BK (Black)

---

## Connections and Schema

---

### NPN



BN : Brown

BU : Blue

BK : Black

---

## Mounting and Clearance

---

### Tightening Torque



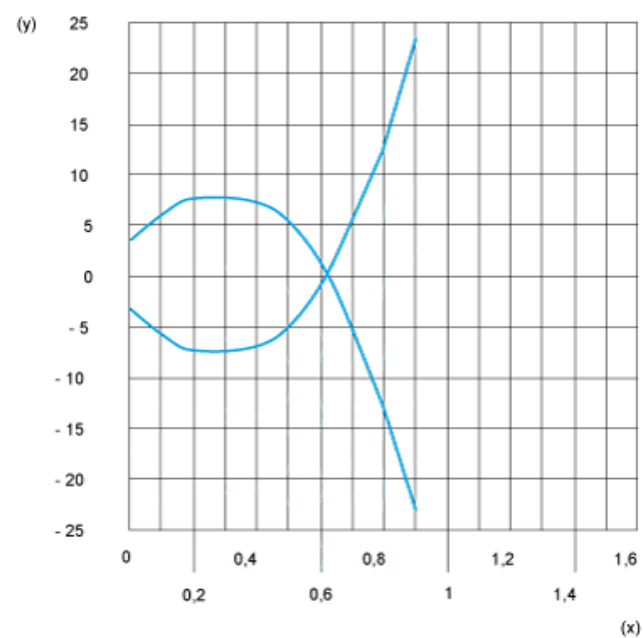
(1) Base mounting fixing bracket

---

Performance Curves

---

Diffuse System



(y) Detection area in mm  
(x) Distance in m