

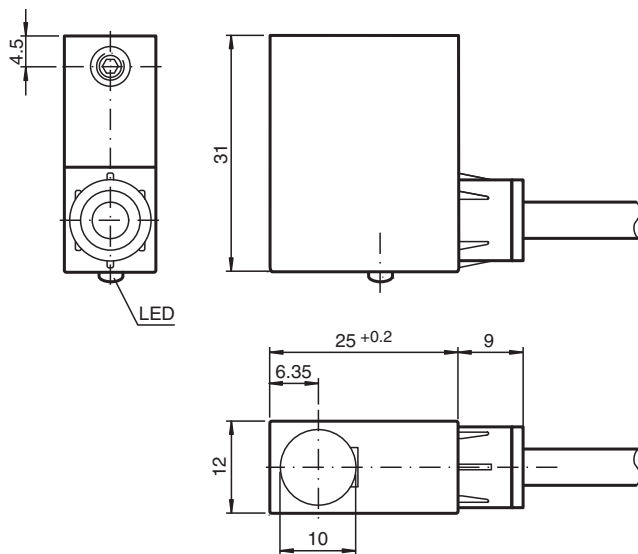
## Inductive sensor

### NJ1,5-F2-E2

- 1.5 mm with switching tappet
- 3-wire DC



## Dimensions



## Technical Data

### General specifications

Switching function		Normally open (NO)
Output type		PNP
Rated operating distance	$s_n$	1.5 mm
Installation		flush
Output polarity		DC
Assured operating distance	$s_a$	0 ... 1.215 mm

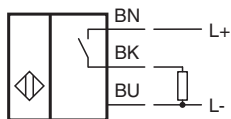
### Nominal ratings

Operating voltage	$U_B$	10 ... 30 V DC
-------------------	-------	----------------

## Technical Data

Switching frequency	f	0 ... 1000 Hz
Reverse polarity protection		reverse polarity protected
Short-circuit protection		pulsing
Voltage drop	U <sub>d</sub>	≤ 3 V
Operating current	I <sub>L</sub>	0 ... 200 mA
No-load supply current	I <sub>0</sub>	≤ 15 mA
Switching state indicator		LED, red
<b>Compliance with standards and directives</b>		
Standard conformity		
Standards		EN 60947-5-2:2007 IEC 60947-5-2:2007
<b>Approvals and certificates</b>		
UL approval		cULus Listed, General Purpose
CSA approval		cCSAus Listed, General Purpose
<b>Ambient conditions</b>		
Ambient temperature		-25 ... 70 °C (-13 ... 158 °F)
<b>Mechanical specifications</b>		
Connection type		cablE PUR , 2 m
Core cross-section		0.34 mm <sup>2</sup>
Housing material		PA
Degree of protection		IP67
Note		Use a stop screw combined with a model -F2 sensor from Pepperl+Fuchs GmbH. The maximum actuation speed of the control slide is 0.1 m/s

## Connection



## Additional Information

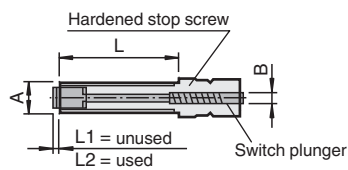
The inductive proximity sensor with plug-in acknowledgement elements is designed for applications where the simple installation of an adjustable mechanical stop with electronic acknowledgement is required.

Heavy duty fine threaded stop screws serve as finely adjustable end stops.

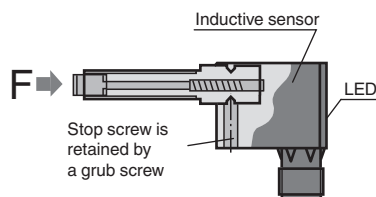
The state of the acknowledgement element is indicated by the built-in LED on the proximity sensor.

### Accessories:

#### Stop screws (Acknowledgement elements)



Type Coding	A	B	L	L1	L2	Load F max.
AS 08/15	M 8 x 1	6	15	3.5	2	2 000 N
AS 08/40	M 8 x 1	6	40	3.5	2	2 000 N
AS 10/50	M 10 x 1	7	50	2.5	1	9 500 N
AS 12/60	M 12 x 1	9	60	2	0.5	20 500 N
AS 12/80	M 12 x 1	9	80	2	0.5	20 500 N



## Accessories

	<b>AS 12/60</b>	Stop screw for series F2 sensors
	<b>AS 12/80</b>	Stop screw for series F2 sensors
	<b>AS 08/15</b>	Stop screw for series F2 sensors
	<b>AS 08/40</b>	Stop screw for series F2 sensors
	<b>AS 10/50</b>	Stop screw for series F2 sensors