



Safety light grid with integrated control unit

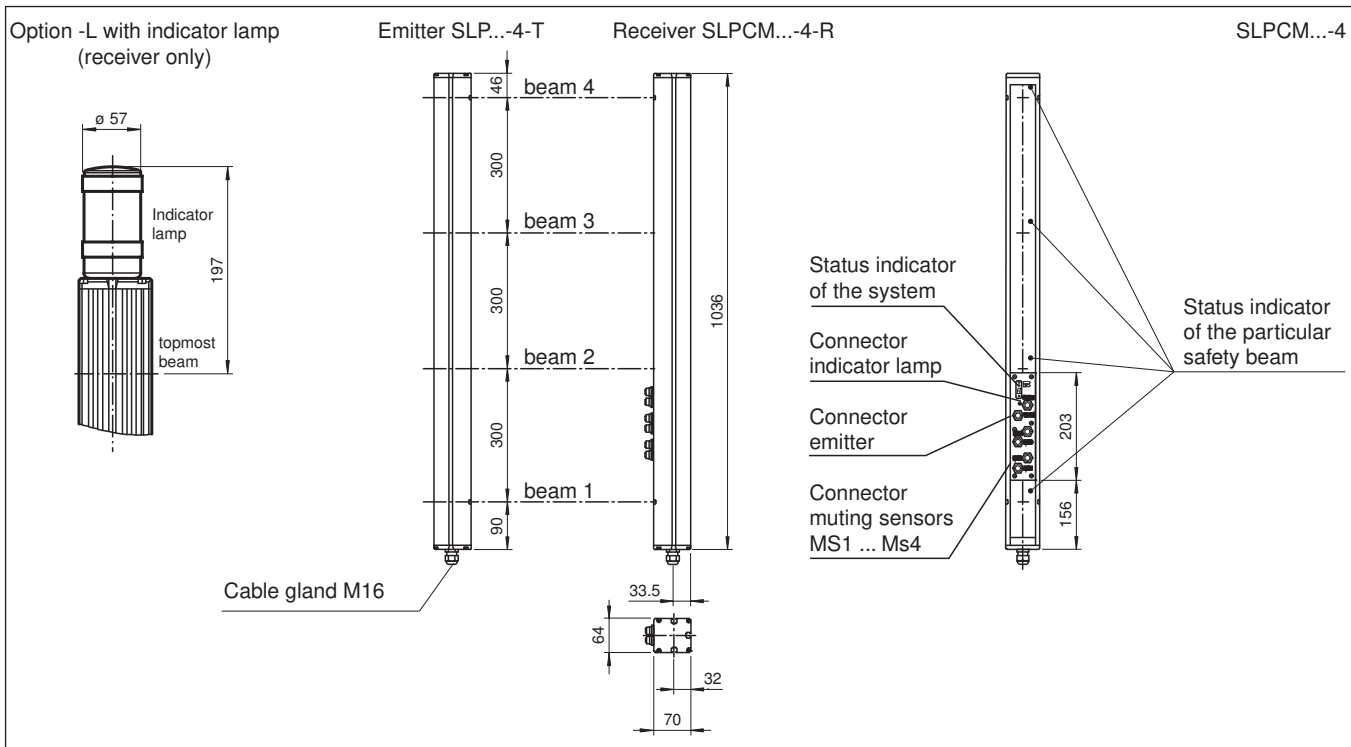


SLPCM10-4/31

- Sensing range up to 10 m
- 4-radial design
- Beam spacing 300 mm
- Self-monitoring (type 4 according to IEC/EN 61496-1)
- Red transmission light
- Usable with or without start/restart disable
- Sequential and parallel muting in various operating modes
- Emergency muting for the correction of the material jam
- Integrated relay monitor
- 7-segment diagnostic display
- Integrated function display
- Pre-fault indication
- OSSD outputs as semiconductor or relay outputs



Dimensions



Technical Data

System components

Emitter	SLP10-4-T
Receiver	SLPCM10-4-R/31

General specifications

Effective detection range	0.2 ... 10 m
---------------------------	--------------

Release date: 2020-04-27 Date of issue: 2020-04-27 Filename: 114864_eng.pdf

Refer to "General Notes Relating to Pepperl+Fuchs Product Information".

Pepperl+Fuchs Group
www.pepperl-fuchs.com

USA: +1 330 486 0001
fa-info@us.pepperl-fuchs.com

Germany: +49 621 776 1111
fa-info@de.pepperl-fuchs.com

Singapore: +65 6779 9091
fa-info@sg.pepperl-fuchs.com

PEPPERL+FUCHS

Technical Data

Light source	LED	
Light type	modulated visible red light	
Tests	IEC/EN 61496	
Safety type according to IEC/EN 61496	4	
Marking	CE	
Target size	static: 32 mm dynamic: 50 mm (at v = 1.6 m/s of the obstacle)	
Beam spacing	300 mm	
Number of beams	4	
Operating mode	Start/restart disable, relay monitor, muting operating modes	
Angle of divergence	< 5 °	
Functional safety related parameters		
Performance level (PL)	PL e	
Category	Cat. 4	
Mission Time (T _M)	20 a	
PFH _d	3.54 E-9	
B _{10d}	see instruction manuals	
Type	4	
Indicators/operating means		
Diagnostics indicator	7-segment display	
Function indicator	LED red: per receiver channel off: interruption flashes: receiver continuously on: reception with sufficient stability control on the front plate: LED red: OSSD off LED green: OSSD on LED yellow: types of muting operation	
Pre-fault indicator	LED red next to receiver flashes	
Control elements	10 DIP switch in receiver terminal compartment	
Electrical specifications		
Operating voltage	U _B	24 V DC -15% / +25% , galvanically isolated
No-load supply current	I ₀	max. 250 mA
Protection class	III , IEC 61140	
Input		
Activation current	approx. 10 mA	
Activation time	0.03 ... 1 s	
Test input	Reset-input for system test	
Function input	Relay monitor, start release, muting sensors (max. 4)	
Output		
Pre-fault indication output	1 PNP, +U _B -2 V, max. 300 mA	
Safety output	2 relay outputs, force-guided NO-contact	
Signal output	1 PNP each, max. 300 mA for start readiness, OSSD on, OSSD off, muting lamp	
Switching voltage	20 ... 60 V DC, 12 ... 25 V AC _{rms}	
Switching current	0.01 ... 2 A	
Switching power	100 VA	
Response time	40 ms	
Conformity		
Functional safety	ISO 13849-1	
Product standard	EN 61496-1 ; IEC 61496-2	
Approvals and certificates		
CE conformity	CE	
Approvals	TÜV SÜD	
USA	TÜV NRTL mark	
Ambient conditions		
Ambient temperature	0 ... 50 °C (32 ... 122 °F)	
Storage temperature	-20 ... 70 °C (-4 ... 158 °F)	

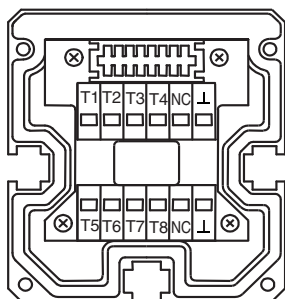
Release date: 2020-04-27 Date of issue: 2020-04-27 Filename: 114864_eng.pdf

Technical Data

Relative humidity	max. 95 %, not condensing
Mechanical specifications	
Degree of protection	IP65
Connection	M16 cable gland , terminal compartment with cage-terminals, M12-connector for emitter, muting lamp as well as other muting sensors
Connection options	Further electrical connection options on request: Connector DIN 43 651 Hirschmann, emitter: 6-pin+PE, receiver: 11-pin+PE
Material	
Housing	extruded aluminum profile, RAL 1021 (yellow) coated
Optical face	Plastic pane
Mass	Per 3700 g

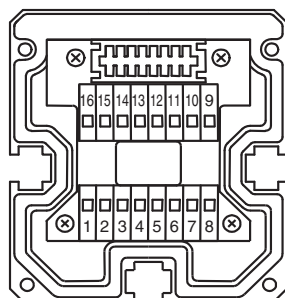
Connection

Emitter SLP



- T1 - Emitter channel 1
- T2 - Emitter channel 2
- T3 - Emitter channel 3
- T4 - Emitter channel 4
- L - 0 V

Receiver SLPCM

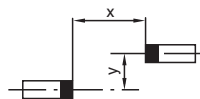
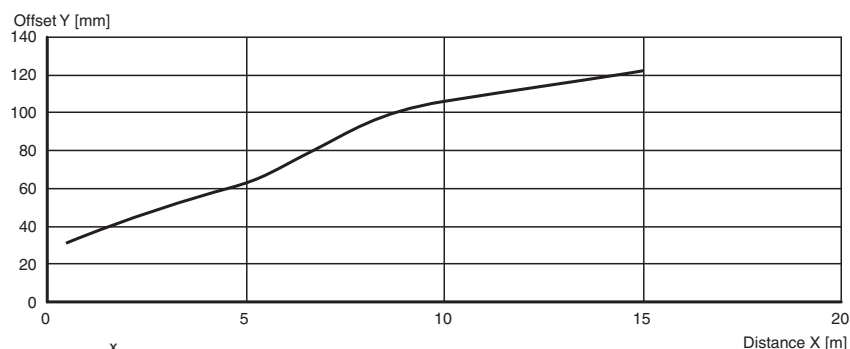


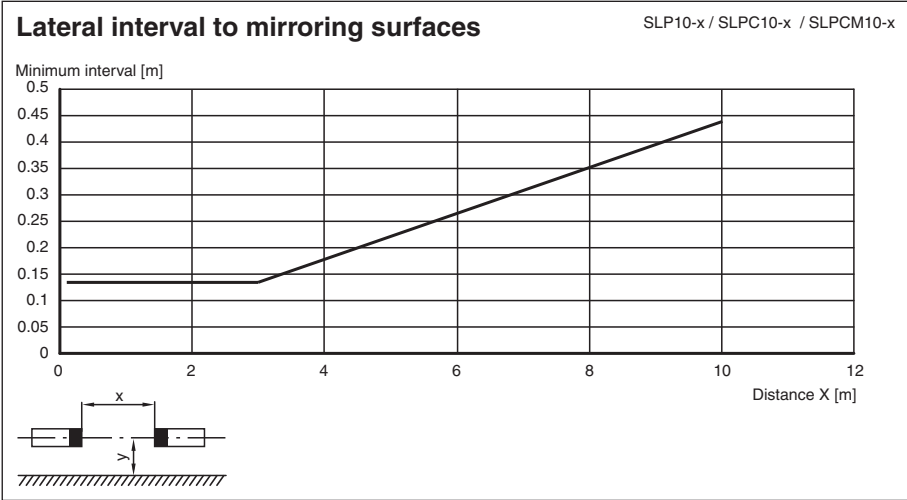
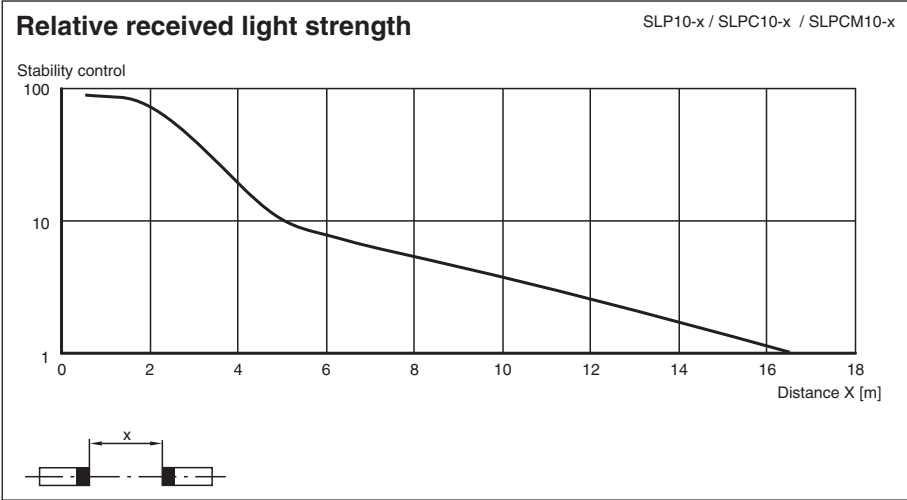
Receiver SLPCM (semiconductor outputs)	Receiver SLPCM/31 (Relay outputs)
4 - n.c. 5 - - 6 - + 7 - OSSD 1 8 - OSSD 2	1 - Functional earth 2 - 0 V 3 - 24 V 4 - 5 - 6 - 7 - 8 - 9 - Input, Relay monitor 10 - Input, Start release 11 - Input, Reset 12 - PNP-output, Soiled optics 13 - PNP-output, Muting lamp 14 - PNP-output, Startup readiness 15 - PNP-output, Indicator OSSD OFF 16 - PNP-output, Indicator OSSD ON

Characteristic Curve


Characteristic response curve

SLP10-x / SLPC10-x / SLPCM10-x



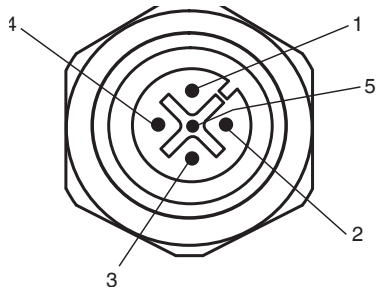


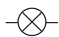
Accessories

	PG SLP-4	Protective glass panes for SLP series
---	-----------------	---------------------------------------

Additional information

Socket assignment on the front side of the device



Indicator lamp control 

Socket	Function
1	OSSD on
2	OSSD off
3	0 V
4	Readiness for startup
5	Muting (monitored)

T1 - T4 transmitter control

Socket	Function
1	Transmitter channel 1
2	Transmitter channel 2
3	0 V
4	Transmitter channel 3
5	Transmitter channel 4

Muting sensor inputs MS1 - MS4

Socket	Function
1	+ 24 V
3	0 V
4	Sensor signal

System accessories

- Mounting set MS SLC
- Profile alignment aid PA SLP/SLC
- Laser alignment aid BA SLP
- Ground pillar UC SLP/SLC
- Housing for pillar
- Enclosure UC SLP/SLC
- Collision protector
- Damping UC SLP/SLC
- Redirection mirror SLP-4-M