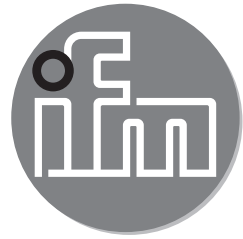


ifm electronic



Mounting instruction

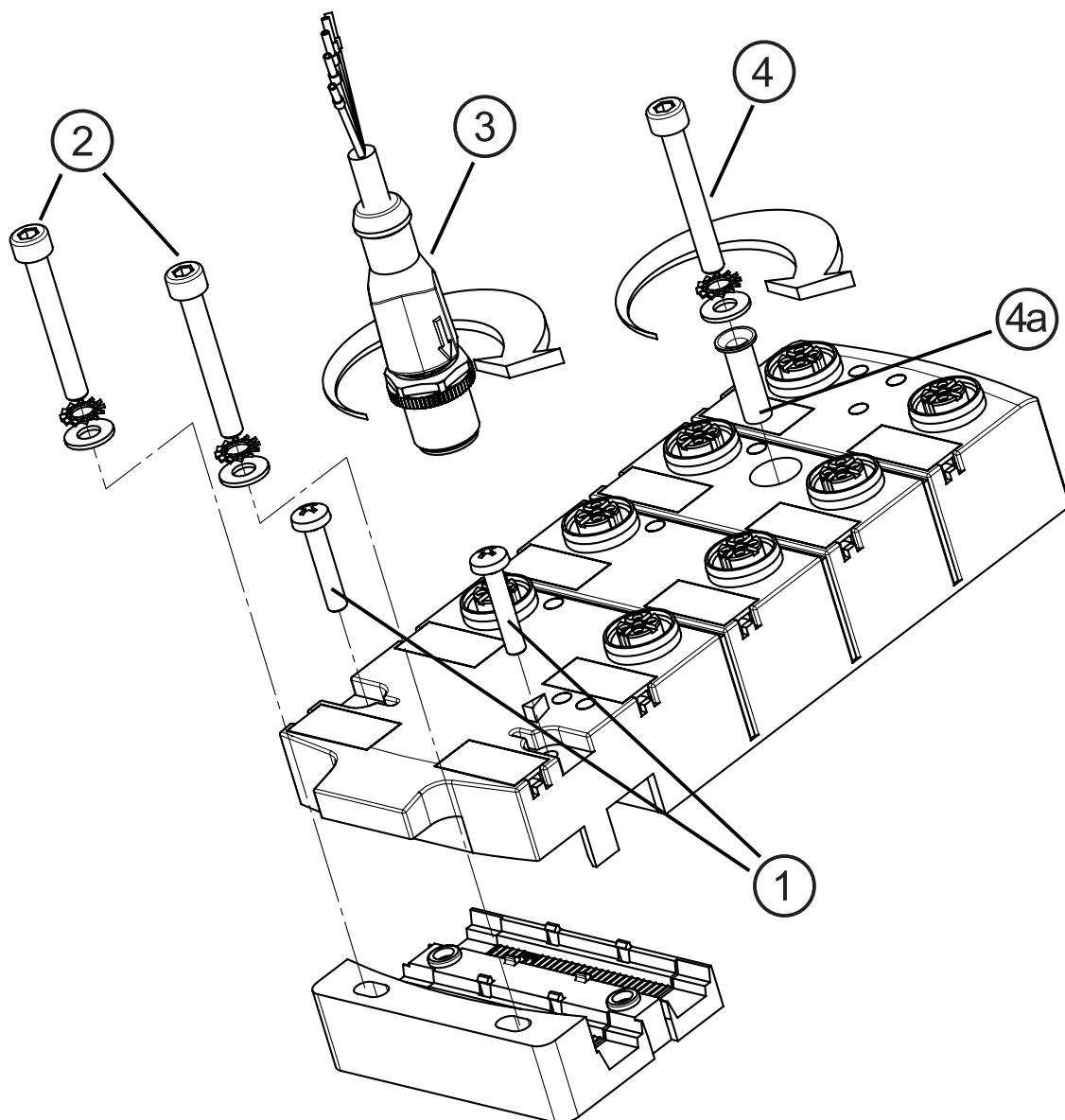
**AS interface**

Mounting kit for  
CompactLine modules

**E70402**

**UK**

7390728 / 00 04 / 2008



## Tightening torques

- 1: 1.2...1.4 Nm - connecting screws upper part / lower part
- 2: 2.0...2.4 Nm - mounting screws (not supplied)
- 3: max. 1.0 Nm - M12 connector
- 4 / 4a: max. 1.8 Nm (in connection with the stainless steel sleeve 2.0...2.4 Nm) - fixing screw, stainless steel sleeve, washer and tooth lock washer for mounting



Use the stainless steel sleeve in case of heavy mechanical stress of the unit.



Note the maximum tightening torque of the connection cable.

## Scope of delivery E70402

10 stainless steel sleeves, 30 tooth lock washers, 30 washers