

## IR12.D03K-F60.IA1E.7FO/B015

Inductive distance measuring sensors - high sensitivity

Article number: 11158152

### overview

- 2,75 ... 3 mm
- current output
- external Teach-in
- connector M12
- -10 ... 60 °C
- IP 67



### Technical data

#### general data

mounting type	flush
special type	linearized high sensitivity
measuring distance Sd	2,75 ... 3 mm
sensitivity	64 mA/mm (Range: 0,25 mm)
resolution	< 0,00025 mm (stat.) < 0,0005 mm (dynam.)
repeat accuracy	< 0,001 mm
adjustment	external Teach-in
teach	1-point analog, factory reset
linearity error	± 5 µm
temperature drift	± 4 % (Full Scale; +10 ... +30 °C) ± 12 % (Full Scale; -10 ... +60 °C)
Teach-Feedback	LED yellow

#### electrical data

response time (factory characteristic)	< 3 ms
voltage supply range +Vs	8 ... 30 VDC

#### electrical data

current consumption max. (no load)	15 mA
output circuit	current output
output signal	4 ... 20 mA
load resistance	< 25 Ohm/V * Vs
short circuit protection	yes
reverse polarity protection	yes

#### mechanical data

type	cylindrical threaded
material (sensing face)	ceramic
housing material	steel nickel plated
dimension	12 mm
housing length	60 mm
connection types	connector M12
tightening torque max.	15 Nm

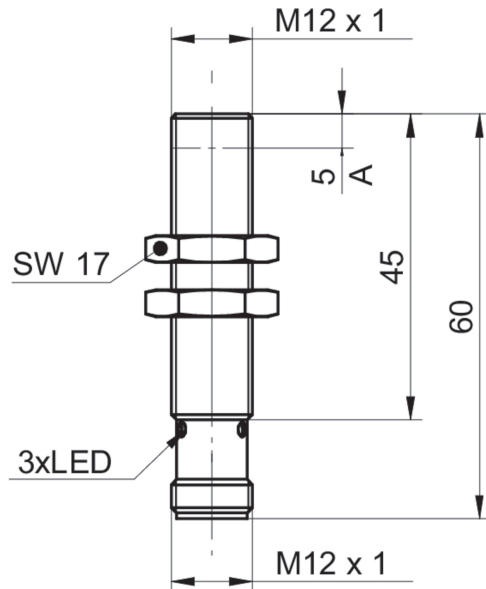
#### ambient conditions

operating temperature	-10 ... +60 °C
protection class	IP 67

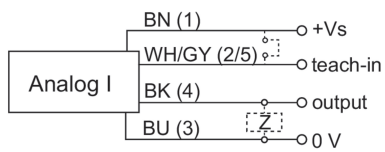
### remarks

- measuring range (0,25 mm) adjustable within 0 - 3 mm
- linear analog output
- high sensitivity (other sensitivities on request)

## dimension drawing



## connection diagram



## pin assignment

