

XUK2LAKSMM12T

photo-electric laser sensor -XUK -thru beam
transmitter - Sn 30m -10..30VDC -M12



Main

Range of product	OsiSense XU
Series name	Application assembly Application material handling
Electronic sensor type	Photo-electric sensor
Sensor name	XUK
Sensor design	Compact 50 x 50
Detection system	Thru beam
Material	Plastic
Type of output signal	Discrete
Supply circuit type	DC
Wiring technique	4-wire
Electrical connection	1 male connector M12, 4 pins
Product specific application	-
Emission	Red laser thru beam class 1
[Sn] nominal sensing distance	25 m thru beam need receiver XUK2LAPSMM12R

Complementary

Enclosure material	ABS/PC
Lens material	PMMA
Maximum sensing distance	30 m thru beam
Add on output	Without
Add on input	Test
Status LED	1 LED (green) for supply
[Us] rated supply voltage	12...24 V DC with reverse polarity protection
Supply voltage limits	10...30 V DC
Maximum voltage drop	<2.4 V (closed state)
Current consumption	<= 30 mA no-load
Depth	50 mm
Height	50 mm
Width	23 mm
Net weight	0.035 kg




Environment

Product certifications	Ecolab CE CULus
Ambient air temperature for operation	-20...60 °C -20...50 °C, UL certified
Ambient air temperature for storage	-20...80 °C
Vibration resistance	7 gn, amplitude = +/- 1.5 mm (f = 10...55 Hz) conforming to IEC 60068-2-6
Shock resistance	30 gn (duration = 11 ms) conforming to IEC 60947-5-2
IP degree of protection	IP67 conforming to IEC 60529 IP69K conforming to DIN 40050

Packing Units

Unit Type of Package 1	PCE
Number of Units in Package 1	1
Package 1 Weight	49 g
Package 1 Height	3 cm
Package 1 width	6 cm
Package 1 Length	9 cm
Unit Type of Package 2	S01
Number of Units in Package 2	28
Package 2 Weight	1.597 kg
Package 2 Height	15 cm
Package 2 width	15 cm
Package 2 Length	40 cm

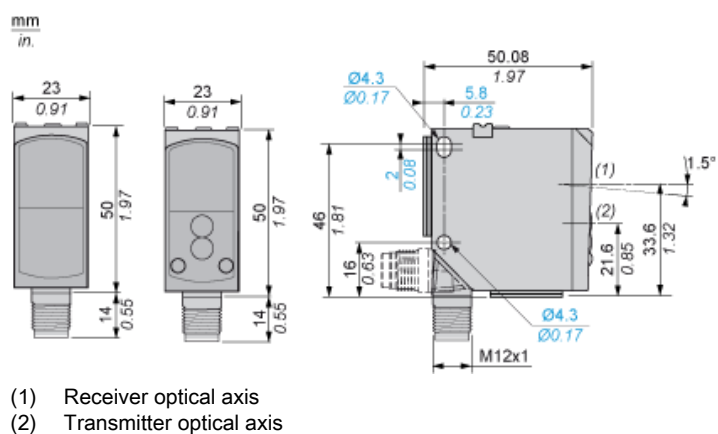
Offer Sustainability

REACH Regulation	 REACH Declaration
EU RoHS Directive	Pro-active compliance (Product out of EU RoHS legal scope)  EU RoHS Declaration
Mercury free	Yes
RoHS exemption information	 Yes

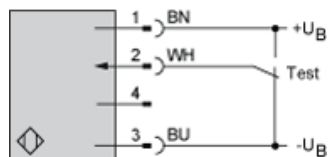
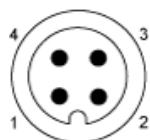
Contractual warranty

Warranty	18 months
----------	-----------

Dimensions



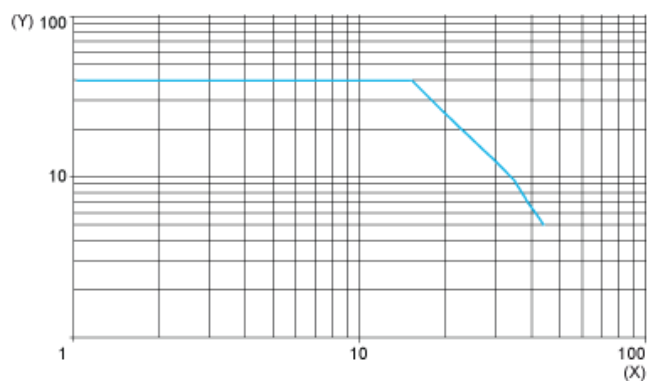
Wiring Schemes Using M12 Connector



- 1 : (+)
2 : Test input (1)
3 : (-)
4 : Pin not connected
BN : Brown
WH : White
BU : Blue
+UB : External teach
-UB : Pushbutton locking
(1) Test input: +UB = test function (transmitter disconnected). -UB or not connected = normal operation

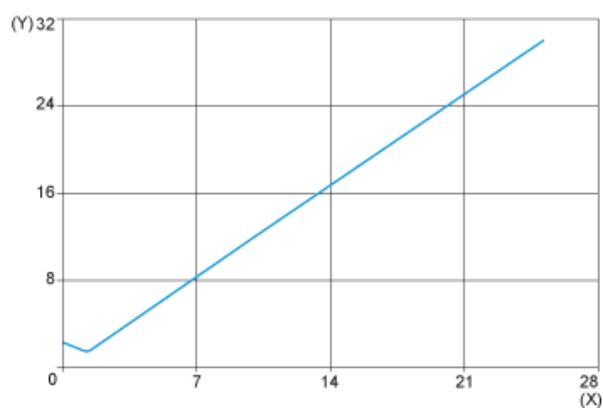
Curves

Excess Gain Curve



(X) Distance (m)
(Y) Gain

Size of Luminous Point



(X) Distance (m)
(Y) Size (mm)