



## Main

Range of product	OsiSense XU
Series name	Application assembly
Electronic sensor type	Photo-electric sensor
Sensor name	XUA
Sensor design	Cylindrical M8
Detection system	Diffuse
Material	Metal
Line of sight type	Axial
Type of output signal	Discrete
Supply circuit type	DC
Wiring technique	3-wire
Discrete output type	PNP
Discrete output function	1 NC
Electrical connection	Cable
Cable length	2 m
Product specific application	-
Emission	Infrared diffuse
[Sn] nominal sensing distance	0.05 m diffuse

## Complementary

Enclosure material	Nickel plated brass
Lens material	PMMA
Maximum sensing distance	0.06 m
Output type	Solid state
Add on output	Without
Cable composition	3 x 0.14 mm <sup>2</sup>
Wire insulation material	PvR
Cable outer diameter	3.5 mm
Status LED	1 LED (yellow) for output state
[Us] rated supply voltage	12...24 V DC with reverse polarity protection
Supply voltage limits	10...30 V DC
Switching capacity in mA	<= 100 mA (overload and short-circuit protection)
Switching frequency	<= 1000 Hz
Maximum voltage drop	<1 V (closed state)
Current consumption	<= 25 mA no-load
Maximum delay first up	20 ms
Maximum delay response	0.5 ms
Maximum delay recovery	0.5 ms
Setting-up	Without sensitivity adjustment
Diameter	8 mm
Length	47 mm
Net weight	0.015 kg

## Environment

Product certifications	CE CULus
Ambient air temperature for operation	-25...55 °C
Ambient air temperature for storage	-30...70 °C
Vibration resistance	7 gn, amplitude = +/- 1 mm (f = 10...55 Hz) conforming to IEC 60068-2-6
Shock resistance	30 gn (duration = 11 ms) conforming to IEC 60068-2-27
IP degree of protection	IP65 conforming to IEC 60529

## Packing Units

Unit Type of Package 1	PCE
Number of Units in Package 1	1
Package 1 Weight	52 g
Package 1 Height	3.5 cm
Package 1 width	9 cm
Package 1 Length	11 cm
Unit Type of Package 2	S01
Number of Units in Package 2	10
Package 2 Weight	682 g
Package 2 Height	15 cm
Package 2 width	15 cm
Package 2 Length	40 cm

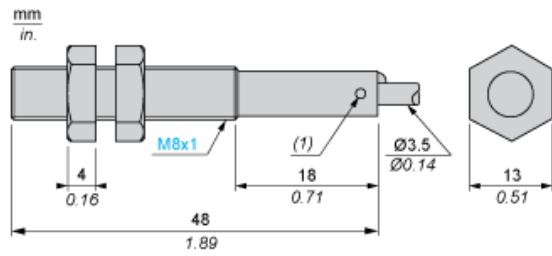
## Offer Sustainability

REACH Regulation	<a href="#">REACH Declaration</a>
EU RoHS Directive	Pro-active compliance (Product out of EU RoHS legal scope) <a href="#">EU RoHS Declaration</a>
Mercury free	Yes
RoHS exemption information	<a href="#">Yes</a>

## Contractual warranty

Warranty	18 months
----------	-----------

Dimensions



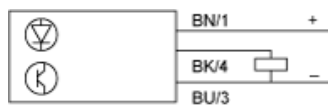
(1) LED, 4 viewing ports at 90°  
Note Fixing nut tightening torque : <2N.m

---

## Wiring Schemes

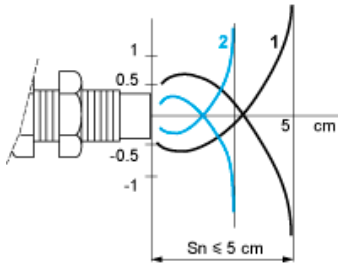
---

### PNP



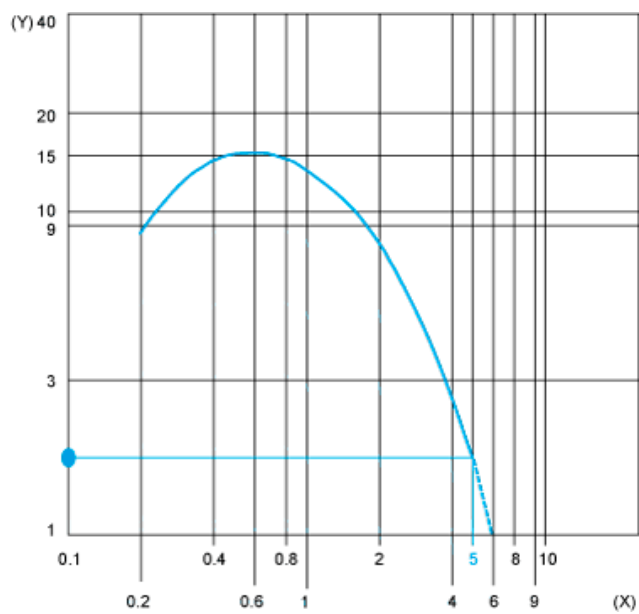
BN : Brown  
BU : Blue  
BK : Black

Detection Curves

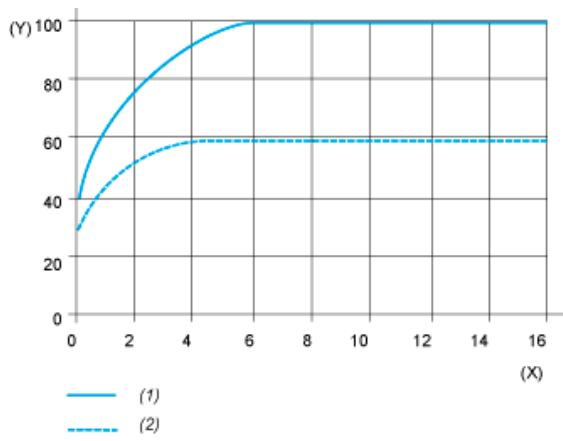


1 : White 90%  
2 : Grey 18%  
Object 5 x 5 cm

Excess Gain Curves (Ambient temperature:  $\pm 25\text{ }^{\circ}\text{C}$ )



(Y) Gain  
(X) Distance (m)  
Object 5 x 5 cm, White 90%



- (1) White
- (2) Grey
- (Y) Variation of sensing distance  $S_n$
- (X) Side of square object (cm)

Detection differential (H) when object approaches from the front:  $H \leq 25\%$  of  $S_n$