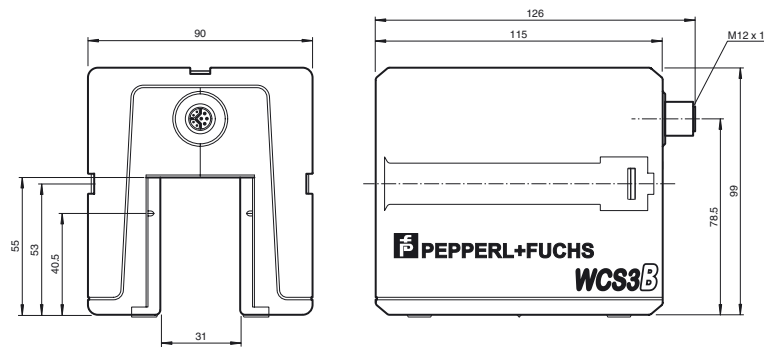
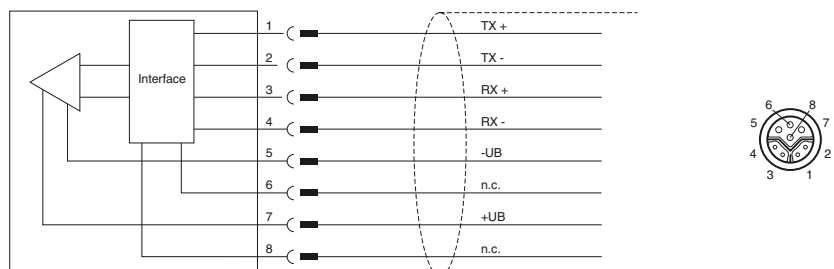
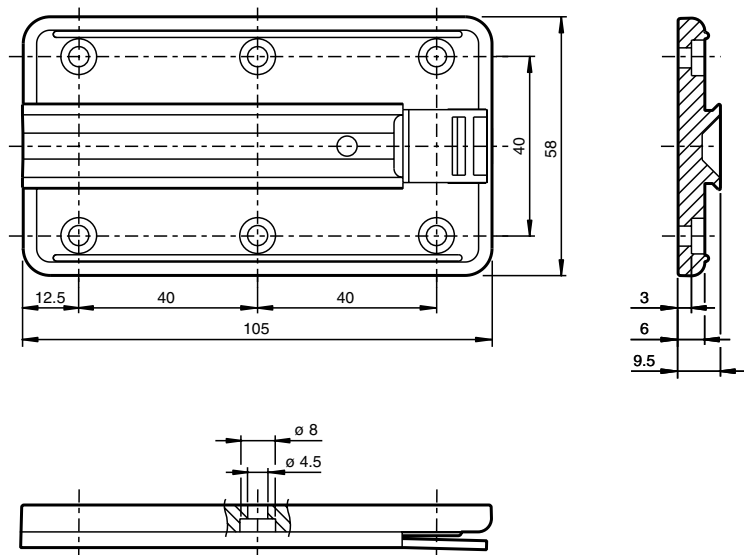




EtherNet/IP™

**Model number****WCS3B-LS510H****Features**

- Non-contact, absolute position encoder
- Output of position and speed
- Automatic detection of dirt accumulation
- Unicast communication
- A shared connection for supply and Ethernet
- Extended temperature range

**Dimensions****Mounting plate****Technical data****General specifications**

Passage speed	v	≤ 12.5 m/s
Measuring range		max. 314.5 m
Free tolerances to code rail		horizontal: 28 mm ( ± 14 mm ) vertical: 25.5 mm ( +11.5 mm/-14 mm )
Resolution		± 0.4 mm (1,250 positions/m)

**Functional safety related parameters**

MTTF <sub>d</sub>	57 a
Mission Time (T <sub>M</sub> )	10 a
Diagnostic Coverage (DC)	0 %

**Indicators/operating means**

LED green	ETHERNET link To: ETHERNET connection OK
LED yellow	ETHERNET Bus Activity Flashing: data transfer
LED red	ETHERNET communication To: communication error
LED red/green	Status indication Green: code rail detected, normal function Red: system error Flashing red: no code rail detected

**Electrical specifications**

Operating voltage	U <sub>B</sub>	10 ... 30 V DC
Power consumption	P <sub>0</sub>	15 W

**Interface**

Interface type	100 BASE-TX
Data output code	binary code
Protocol	EtherNet/IP

Transfer rate	100 MBit/s
---------------	------------

**Standard conformity**

Emitted interference	EN 61000-6-4:2007+A1:2011
Noise immunity	EN 61000-6-2:2005
Shock resistance	EN 60068-2-27:2009
Vibration resistance	EN 60068-2-6:2008

**Ambient conditions**

Operating temperature	-40 ... 60 °C (-40 ... 140 °F)
Storage temperature	-40 ... 85 °C (-40 ... 185 °F)

**Mechanical specifications**

Connection type	8-pin, M12 x 1 connector socket, Y-coded
Cable gland	Max. tightening torque of the cap nut: ≤ 0.4 Nm
Degree of protection	IP54
Material	
Housing	ABS, PC (Polycarbonate)
Mass	500 g

**General information**

Ordering information	Mounting plate included with delivery
----------------------	---------------------------------------

**Accessories****V19SY-G-BK5M-PUR-ABG**

Male single-ended cordset, M12, 8-pin, Y encryption, PUR cable, shielded

**V19SY-G-BK2M-PUR-ABG**

Male single-ended cordset, M12, 8-pin, Y encryption, PUR cable, shielded

**WCS3B-PL2**

Transparent protective case and seal for WCS3B reader

**WCS-MP1**

Mounting plate for reading heads WCS2 and WCS3

**V19SY-G-BK10M-PUR-ABG**

Male single-ended cordset, M12, 8-pin, Y encryption, PUR cable, shielded

**V45-G**

Field-attachable male connector

**V45-GP**

Field-attachable "Push-Pull" connector

**V15S-W-ABG-PG9**

Cable connector, M12, 5-pin, shielded, non pre-wired

**V15S-G-ABG-PG9**

Cable connector, M12, 5-pin, shielded, non pre-wired

**WCS-V45DIN-8P**

Terminal Block