



## Model Number

**UBC250-12GM-I-V1**

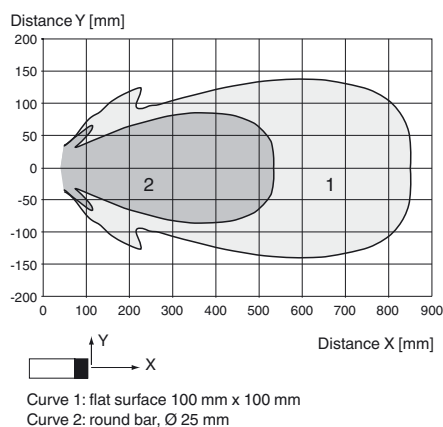
Single head system

## Features

- **High chemical resistance through PTFE coated transducer surface**
- **Stainless Steel enclosure**
- **Analog output 4 mA ... 20 mA**
- **Temperature compensation**
- **Measuring window adjustable**
- **Program input**

## Diagrams

### Characteristic response curve



## Technical data

### General specifications

Sensing range	30 ... 250 mm
Adjustment range	50 ... 250 mm
Dead band	0 ... 30 mm
Standard target plate	100 mm x 100 mm
Transducer frequency	approx. 310 kHz
Response delay	approx. 50 ms

### Electrical specifications

Operating voltage $U_B$	10 ... 30 V DC, ripple 10 % <sub>SS</sub>
No-load supply current $I_0$	≤ 30 mA

### Input

Input type	1 program input lower evaluation limit A1: $-U_B \dots +1$ V, upper evaluation limit A2: $+4$ V ... $+U_B$ input impedance: > 4.7 kΩ, pulse duration: ≥ 1 s
------------	---

### Output

Output type	1 analog output 4 ... 20 mA
Resolution	0.17 mm

Deviation of the characteristic curve	± 1 % of full-scale value
Repeat accuracy	± 0.5 % of full-scale value
Load impedance	0 ... 300 Ω at $U_B > 10$ V; 0 ... 500 Ω at $U_B > 15$ V
Temperature influence	± 1.5 % of full-scale value

### Ambient conditions

Ambient temperature	-25 ... 70 °C (-13 ... 158 °F)
Storage temperature	-40 ... 85 °C (-40 ... 185 °F)

### Mechanical specifications

Connection type	Connector M12 x 1, 4-pin
Degree of protection	IP68 / IP69K
Material	
Housing	stainless steel 1.4404 / AISI 316L O-ring for cover seal: Viton
Transducer	PTFE (diaphragm surface)
Mass	35 g

### Factory settings

Output	evaluation limit A1: 50 mm evaluation limit A2: 250 mm output function: rising ramp
--------	---

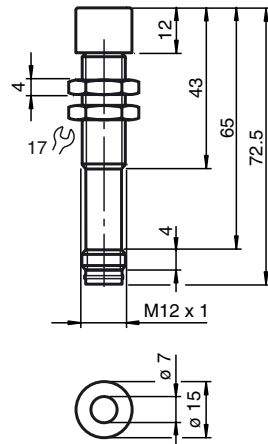
### Compliance with standards and directives

Standard conformity	
Standards	EN 60947-5-2:2007+A1:2012 IEC 60947-5-2:2007 + A1:2012 EN 60947-5-7:2003 IEC 60947-5-7:2003

### Approvals and certificates

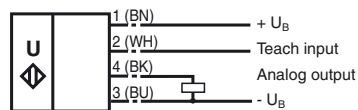
UL approval	cULus Listed, Class 2 Power Source
CCC approval	CCC approval / marking not required for products rated ≤36 V

## Dimensions



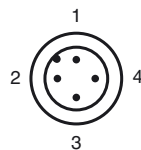
## Electrical Connection

Standard symbol/Connections:  
(version I)



Core colors in accordance with EN 60947-5-2.

## Pinout



Wire colors in accordance with EN 60947-5-2

1	BN	(brown)
2	WH	(white)
3	BU	(blue)
4	BK	(black)

## Additional Information

### Programming the analog output mode

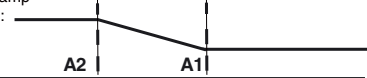
Rising ramp

A1 < A2:



Falling ramp

A2 < A1:



## Accessories

### UB-PROG2

Programming unit

### BF 5-30

Universal mounting bracket for cylindrical sensors with a diameter of 5 ... 30 mm

### BF 12

Mounting flange, 12 mm

### V1-G-2M-PVC

Female cordset, M12, 4-pin, PVC cable

### V1-W-2M-PUR

Female cordset, M12, 4-pin, PUR cable

## Adjusting the evaluation limits

The ultrasonic sensor features an analogue output with two teachable evaluation limits. These are set by applying the supply voltage  $-U_B$  or  $+U_B$  to the TEACH-IN input. The supply voltage must be applied to the TEACH-IN input for at least 1 s. The evaluation limit A1 is taught with  $-U_B$ , A2 with  $+U_B$ .

Two different output functions can be set:

1. Analogue value increases with rising distance to object (rising ramp)
2. Analogue value falls with rising distance to object (falling ramp)

### TEACH-IN rising ramp (A2 > A1)

- Position object at lower evaluation limit
- TEACH-IN lower limit A1 with  $-U_B$
- Position object at upper evaluation limit
- TEACH-IN upper limit A2 with  $+U_B$

### TEACH-IN falling ramp (A1 > A2):

- Position object at lower evaluation limit
- TEACH-IN lower limit A2 with  $+U_B$
- Position object at upper evaluation limit
- TEACH-IN upper limit A1 with  $-U_B$

## Installation conditions

If the sensor is installed at places, where the environment temperature can fall below 0 °C, for the sensors fixation, one of the mounting flanges BF 12 or BF 5-30 must be used. In case of direct mounting of the sensor in a through hole, it has to be fixed at the middle of the housing thread.

## Note

If the sensor is used in an environment with strong electromagnetic interference, we recommend non-conductive mounting. For this, use the accompanying plastic nuts or the BF12 mounting flange.

Please observe proper application when using the accompanying plastic nuts. The hole for the sensor must be  $\geq 14$  mm.

