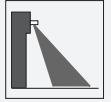


Radar sensor RaDec-M-NA

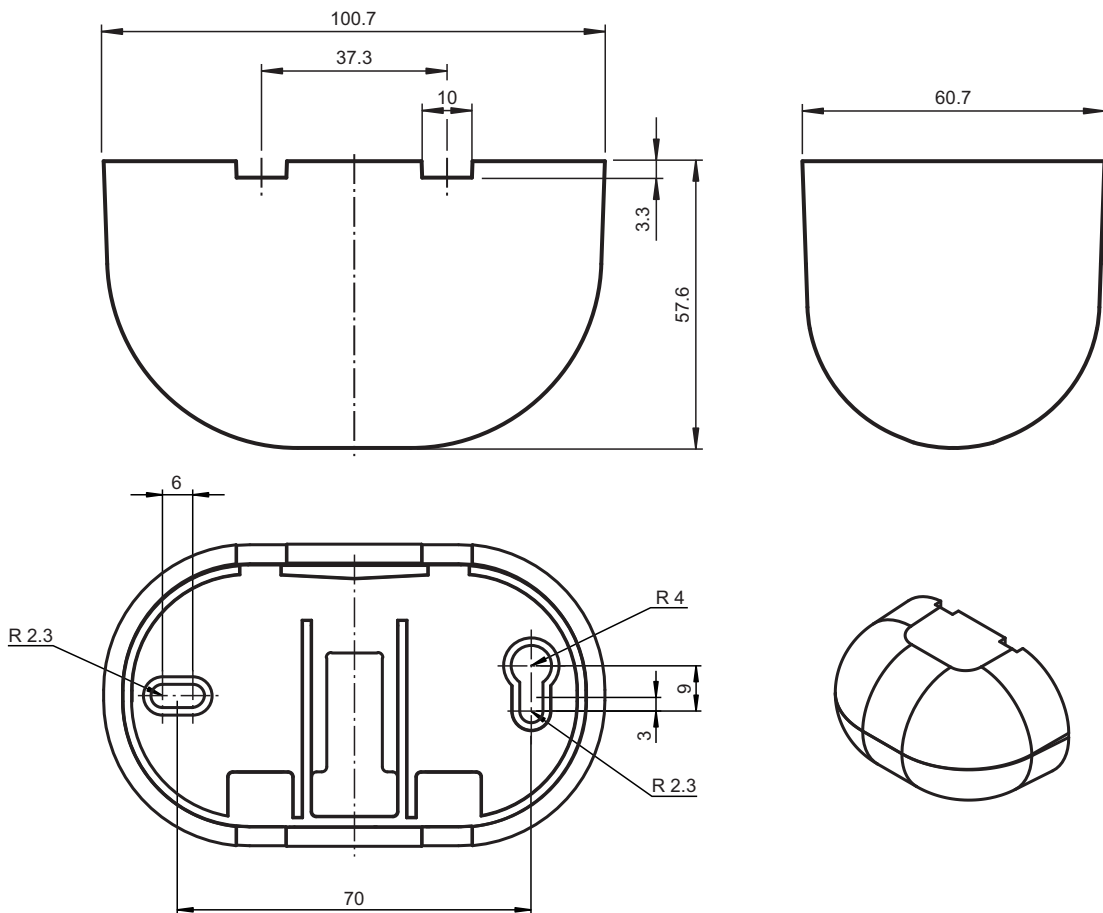


- Standard radar motion sensor with basic functionality
- Reliable detection of people and vehicles
- Simplest adjustment of the sensing range
- Wide range of sensitivity adjustment
- Wall and ceiling mountable
- Version with FCC-frequency

FCC-approved standard radar motion sensor with basic functionality. 2 m x 4.5 m detection range. Max 4 m mounting height. Black housing. Relay contact output. Cable connection.

Function

Dimensions



Release date: 2020-04-02 Date of issue: 2020-04-02 Filename: 257838_eng.pdf

Refer to "General Notes Relating to Pepperl+Fuchs Product Information".

Pepperl+Fuchs Group
www.pepperl-fuchs.com

USA: +1 330 486 0001
fa-info@us.pepperl-fuchs.com

Germany: +49 621 776 1111
fa-info@de.pepperl-fuchs.com

Singapore: +65 6779 9091
fa-info@sg.pepperl-fuchs.com

PF PEPPERL+FUCHS

Technical Data

General specifications			
Sensing range	broad: 2000x 4500 mm (DxW) at 2200 mm mounting height and 30° tilt angle narrow: 4500x 2000 mm (DxW) at 2200 mm mounting height and 30° tilt angle		
Function principle	Microwave module		
Detection speed	min. 0.1 m/s		
Setting angle	0 ... 90 ° in 5 ° increments		
Operating frequency	24.075 ... 24.175 GHz K-Band		
Operating mode	Radar motion sensor		
Transmitter radiated power (EIRP)	< 20 dBm		
Functional safety related parameters			
MTTF _d	970 a		
Mission Time (T _M)	20 a		
Diagnostic Coverage (DC)	0 %		
Indicators/operating means			
Function indicator	LED red		
Control elements	potentiometer		
Control elements	sensitivity adjustment		
Electrical specifications			
Operating voltage	U _B	12 ... 36 V DC , 12 ... 28 V AC	
No-load supply current	I ₀	≤ 50 mA at 24 V DC	
Power consumption	P ₀	≤ 1.7 W	
Output			
Switching type	NO/NC		
Signal output	relay		
Switching voltage	max. 48 V AC / 48 V DC		
Switching current	max. 0.5 A AC / 1 A DC		
Switching power	max. 24 W / 60 VA		
De-energized delay	t _{off}	0.5 s	
Approvals and certificates			
FCC approval	FCC Rules part 15 / This device can be used in the USA.		
IC approval	RSS210 Issue 8.0 / This device can be used in Canada.		
Approvals	Use in countries within the European Union is not permitted. In other countries, all applicable national regulations must be observed.		
Ambient conditions			
Operating temperature	-20 ... 60 °C (-4 ... 140 °F)		
Storage temperature	-30 ... 70 °C (-22 ... 158 °F)		
Relative humidity	max. 90 % non-condensing		
Mechanical specifications			
Mounting height	max. 4000 mm		
Degree of protection	IP54		
Connection	Connecting cable 2.5 m included with delivery		
Material			
Housing	PC/ABS black		
Mass	130 g		
Dimensions	101 mm x 60 mm x 59 mm		
Suitable series			
Series	RaDec		

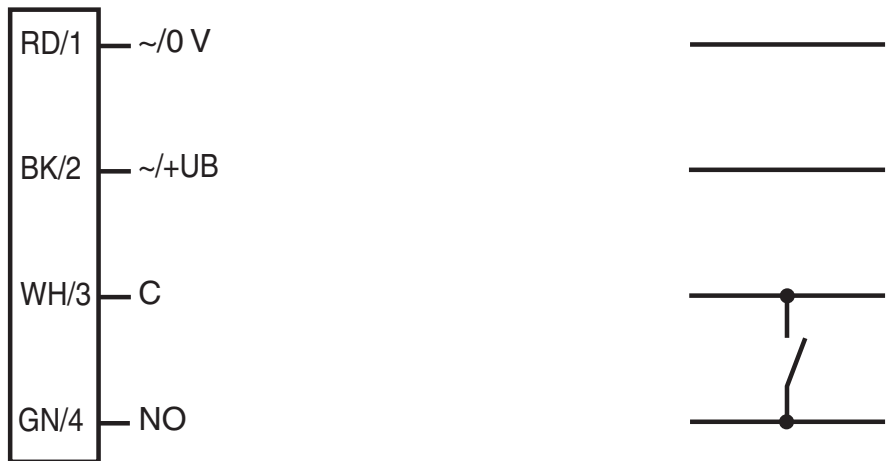
Release date: 2020-04-02 Date of issue: 2020-04-02 Filename: 257838_eng.pdf

Refer to "General Notes Relating to Pepperl+Fuchs Product Information".

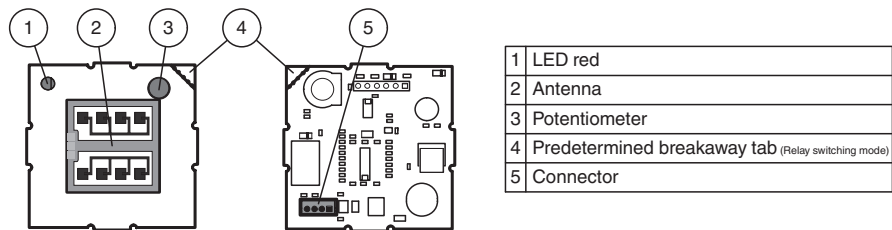
Pepperl+Fuchs Group
www.pepperl-fuchs.comUSA: +1 330 486 0001
fa-info@us.pepperl-fuchs.comGermany: +49 621 776 1111
fa-info@de.pepperl-fuchs.comSingapore: +65 6779 9091
fa-info@sg.pepperl-fuchs.com

PEPPERL+FUCHS

Connection Assignment




Assembly



Application



Accessories

	RaDec Weather Cap	Weather hood for radar sensors series RaDec
---	--------------------------	---

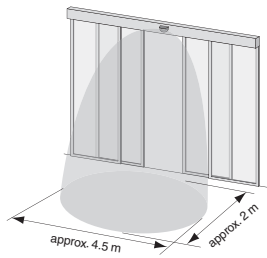
Release date: 2020-04-02 Date of issue: 2020-04-02 Filename: 257838_eng.pdf

Commissioning

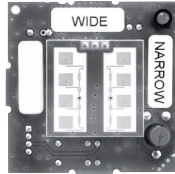
Sensing Range

A narrower or wider sensing area can be achieved with turning the plug-in antenna.

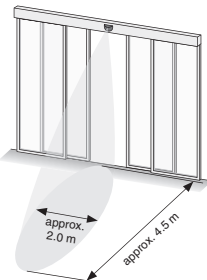
Wide:



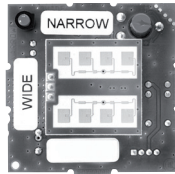
Mounting height 2200 mm / tilt angle 30°
Antenna position:



Narrow:



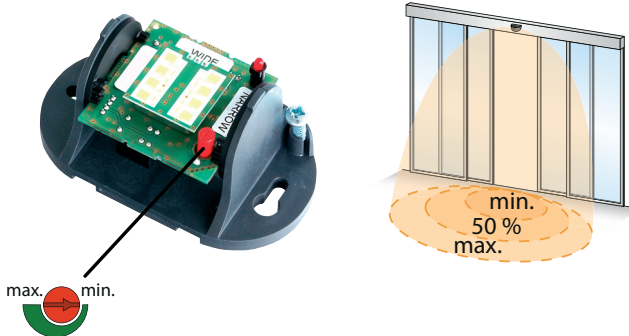
Mounting height 2200 mm / tilt angle 30°
Antenna position:



The detection field can be swivelled in 10 steps from 0° ... 90°.

Sensitivity Settings

The sensitivity potentiometer can be used to adjust the size of the detection field.



Accessories

Other suitable accessories can be found at www.pepperl-fuchs.com

Function Principle

Microwave sensors are microwave scanners that use the principle of the Doppler radar. The most important requirement for microwave detection is that the object to be detected is moving. Some applications include controlling automatic and industrial doors.

The microwave sensors emit microwaves of a defined frequency in order to detect people and large objects moving at speeds between 100 mm/sec and 5 m/sec. Stationary people or objects are not detected. Based on the latest 24 GHz technology with integrated microprocessor control, these sensors provide a high degree of reliability even in difficult operating conditions. The 24 GHz frequency, known as the 'K-band,' is reserved by CETECOM for this application area worldwide.

Application

- Opening impulse sensors for automatic doors and industrial doors
- Monitoring approach areas to elevators
- Motion sensors for people and objects
- Impulse sensors for escalators

Release date: 2020-04-02 Date of issue: 2020-04-02 Filename: 257838_eng.pdf

Refer to "General Notes Relating to Pepperl+Fuchs Product Information".

Release date: 2020-04-02 Date of issue: 2020-04-02 Filename: 257838_eng.pdf

Refer to "General Notes Relating to Pepperl+Fuchs Product Information".

Pepperl+Fuchs Group
www.pepperl-fuchs.com

USA: +1 330 486 0001
fa-info@us.pepperl-fuchs.com

Germany: +49 621 776 1111
fa-info@de.pepperl-fuchs.com

Singapore: +65 6779 9091
fa-info@sg.pepperl-fuchs.com