

Protection Column with Path-Folding Mirror

SZ000EU170NN01

Part Number



- Floor or wall mounting possible
- Mechanical protection against damages
- Quick and easy alignment through innovative mounting

The wenglor protection column offers optimal protection for path-folding mirrors in rough surroundings. When combined with the floor mounting, this enables free-standing mounting. The wall mounting is suitable for stable horizontal mounting at standard profiles. The integrated water level enables an intuitive adjustment. A quick and precise axial and vertical alignment can be made with a few quick hand grips.

Technical Data

Mechanical Data

Housing Material	Aluminum
Disc Material	Plate Glass
Mounting Space (EBR)	1703 mm

Suitable Mounting Technology No.

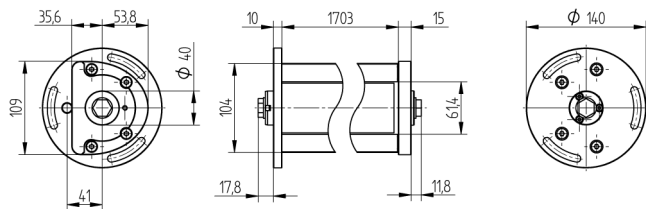
770 780

Floor or Wall Mounting are required for mounting (not included in delivery)

Complementary Products

Floor Mounting ZMBSZ0001

Wall Mounting ZMBSZ0002



All dimensions in mm (1 mm = 0.03937 Inch)