

IWRM 18I97T4/S14

Inductive distance measuring sensors - outdoor and washdown

Article number: 11014720

overview

- 0 ... 8 mm
- current output
- connector M12
- -40 ... 70 °C
- IP 67



Technical data

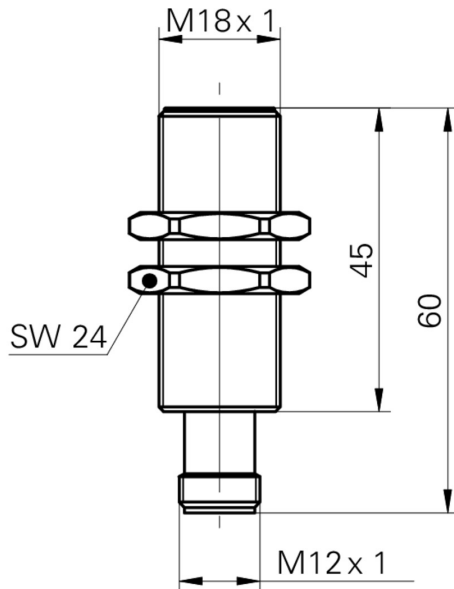
general data		electrical data	
mounting type	quasi-flush	load resistance +Vs min.	< 330 Ohm
special type	Outdoor design	load resistance +Vs max.	< 1000 Ohm
measuring distance Sd	0 ... 8 mm	short circuit protection	yes
resolution	< 0,005 mm (stat.) < 0,01 mm (dynam.)	reverse polarity protection	yes
repeat accuracy	< 0,015 mm	mechanical data	
linearity error	± 400 µm	type	cylindrical threaded
temperature drift	± 10 % (Full Scale)	material (sensing face)	PBT
electrical data		housing material	brass nickel plated
response time (factory characteristic)	< 2 ms	dimension	18 mm
voltage supply range +Vs	15 ... 30 VDC	housing length	60 mm
current consumption max. (no load)	40 mA	connection types	connector M12
output circuit	current output	tightening torque max.	40 Nm (Front: 28 Nm)
output signal	4 ... 20 mA	ambient conditions	
		operating temperature	-40 ... +70 °C
		protection class	IP 67

IWRM 18I97T4/S14

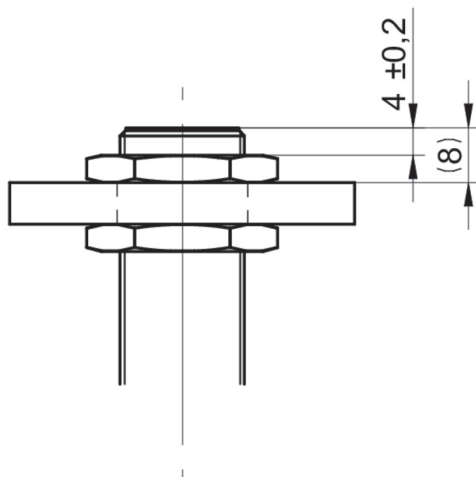
Inductive distance measuring sensors - outdoor and washdown

Article number: 11014720

dimension drawing



installation drawing



connection diagram

