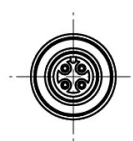
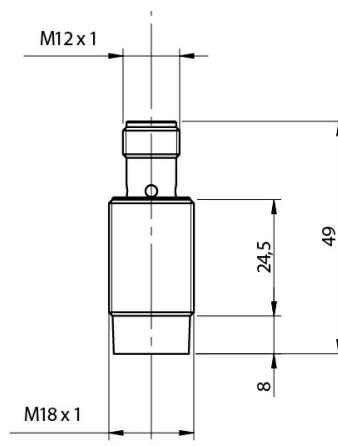
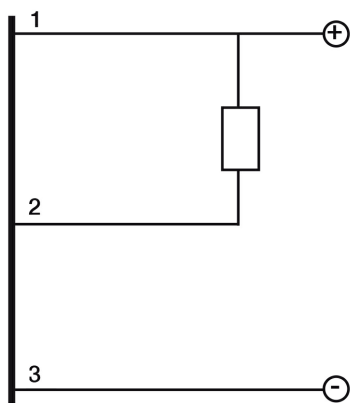


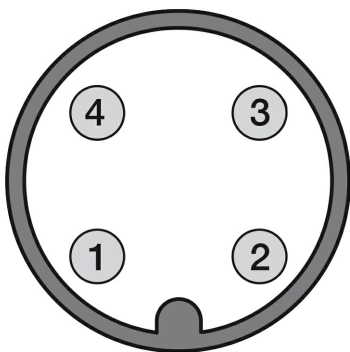


Indicative image

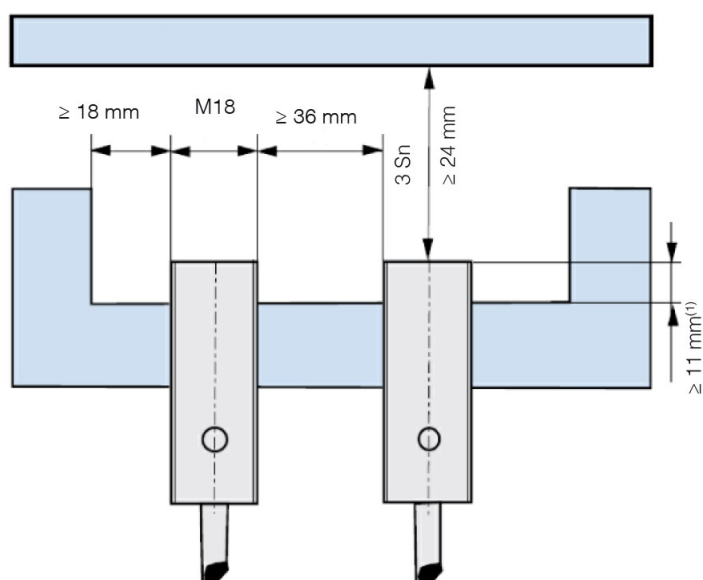
M18 CYLINDRICAL INDUCTIVE SENSORS

- Wide range of models: standard, long distance
- Output: cable, M12 and plug cable exit
- Models with 2, 3, and 4 wires
- ATEX models, cat. 3, available on request
- Models with complementary output (NO+NC)

**ELECTRICAL DIAGRAMS OF THE CONNECTIONS****CONNECTOR**



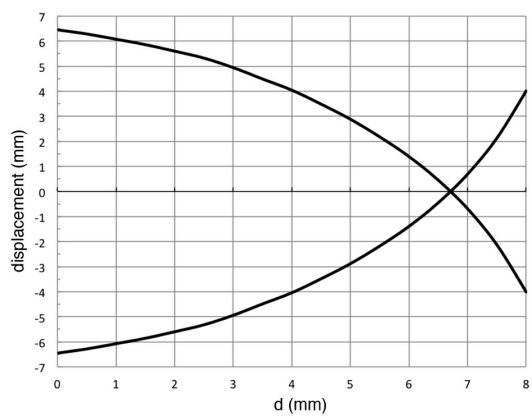
INSTALLATION



⁽¹⁾ ≥ 6 mm for non magnetic materials

RESPONSE CURVES

Parallel offset



Datasensing S.r.l.

Strada S.Caterina, 235

41122 Modena (MO)

Tel. 059 420411

Fax 059 253973

E-mail info@datasensing.com

date of printing

29/04/2022 05:32:04