

IWRM 18U9704/S14

Inductive distance measuring sensors

Article number: 10151329

overview

- 0 ... 8 mm
- voltage output
- connector M12
- -10 ... 70 °C
- IP 67



Technical data

general data

mounting type	quasi-flush
measuring distance Sd	0 ... 8 mm
resolution	< 0,005 mm (stat.) < 0,01 mm (dynam.)
repeat accuracy	< 0,015 mm
linearity error	± 400 µm
temperature drift	± 5 % (Full Scale)

electrical data

response time (factory characteristic)	< 2 ms
voltage supply range +Vs	15 ... 30 VDC
current consumption max. (no load)	20 mA
output circuit	voltage output

electrical data

output signal	0 ... 10 VDC
load resistance	> 1000 Ohm
short circuit protection	yes
reverse polarity protection	yes

mechanical data

type	cylindrical threaded
housing material	brass nickel plated
dimension	18 mm
housing length	60 mm
connection types	connector M12
tightening torque max.	40 Nm (Front: 28 Nm)

ambient conditions

operating temperature	-10 ... +70 °C
protection class	IP 67

remarks

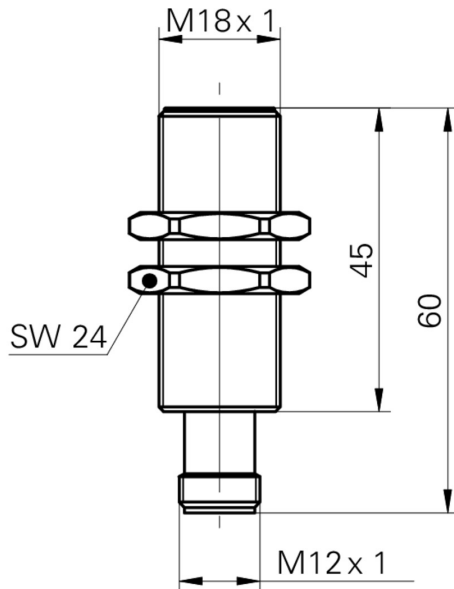
- linearity deviation (S = 0,5...8 mm) ± 10% (Full Scale)
- deviation (S = 8 mm): ± 0,2 V

IWRM 18U9704/S14

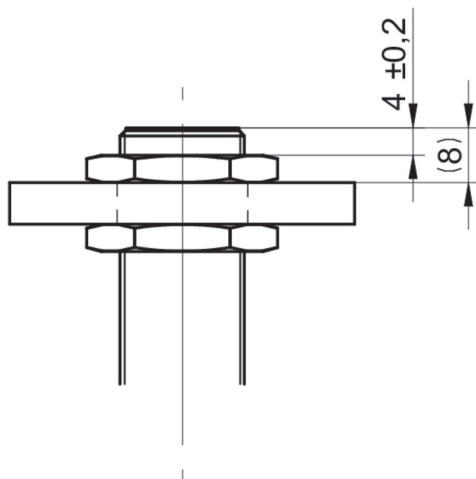
Inductive distance measuring sensors

Article number: 10151329

dimension drawing



installation drawing



connection diagram

