

# Protection Column with Path-Folding Mirror

## Z2SU003

Part Number



- **Effective protection against mechanical damage**
- **Efficient area protection with just one protective device**
- **Flexible installation: install on the ground or walls**
- **Simple alignment via innovative mounting bracket**

The protection column for path-folding mirrors provides secure protection against bumps, collisions, and machines. Mirror columns are used in connection with safety light curtains or safety light arrays. They direct the beams from emitter to receiver along multiple sides of a system or machine. This can be used to efficiently secure entire areas with just one protective device. A freestanding setup is possible using the ground mount of Type ZMBSZ0001. The wall mount of Type ZMBSZ0002 is suitable for horizontal setups.

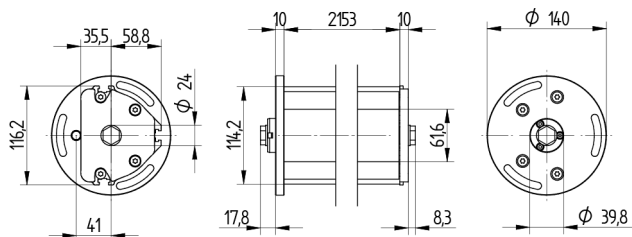
### Technical Data

#### Mechanical Data

Housing Material	Aluminum
Disc Material	Plate Glass
Mounting Space (EBR)	2153 mm
Suitable Mounting Technology No.	710

### Complementary Products

Floor Mounting ZMBSZ0001
Wall Mounting ZMBSZ0002



All dimensions in mm (1 mm = 0.03937 Inch)