



Main

| | |
|---------------------------|--------------------------------------|
| Range of product | Preventa XY2 |
| Product or component type | Dual emergency stop rope pull switch |
| Device short name | XY2CED |
| Housing colour | Red RAL 3000 |
| Overvoltage category | Class I conforming to EN/IEC 61140 |

Complementary

| | |
|--|---|
| Local signalling | With pilot light, yellow, 24...130 V |
| Number of cables | 2 |
| Trigger cable maximum length | 2 x 100 m |
| Bellow material | Nitril |
| Body material | Zamak |
| Cover material | Stainless steel |
| Reset | By flush push-button |
| Contacts type and composition | 2 x (1 NC + 1 NO) |
| Contact operation | Slow-break |
| Trigger cable anchor point | RH and LH sides |
| Connections - terminals | Screw clamp terminal, 1 x 0.5...2 x 1.5 mm ² |
| Tightening torque | 0.8...1.2 N.m |
| Cable entry number | 3 plain hole for Pg 13.5 or ISO M20 cable gland |
| Safety level | Can reach PL = e with the appropriate monitoring system and correctly wired conforming to EN/ISO 13849-1 Can reach category 4 with the appropriate monitoring system and correctly wired conforming to EN/ISO 13849-1 Can reach SIL 3 with the appropriate monitoring system and correctly wired conforming to EN/IEC 61508 |
| Safety reliability data | B10d = 300000 conforming to IEC 60947-5-5 value given for a life time of 20 years limited by mechanical or contact wear |
| Marking | CE |
| Mechanical durability | 60000 cycles |
| Distance between cable supports | 3...5 m |
| [Ie] rated operational current | 3 A at 240 V, AC-15, A300 conforming to EN/IEC 60947-5-1 appendix A 0.27 A at 250 V, DC-13, Q300 conforming to EN/IEC 60947-5-1 appendix A |
| [Ithe] conventional enclosed thermal current | 10 A |
| [Ui] rated insulation voltage | 500 V (pollution degree 3) conforming to EN/IEC 60947-1 300 V conforming to UL 508 300 V conforming to CSA C22.2 No 14 |
| [Uimp] rated impulse withstand voltage | EN/IEC 60947-1 6 kV |
| Positive opening | With conforming to EN/IEC 60947-5-1 |
| Maximum resistance across terminals | 25 MOhm conforming to EN/IEC 60255-7 category 3 |
| Short-circuit protection | 10 A cartridge fuse type gG conforming to EN/IEC 60269 |
| Terminals description ISO n°1 | (13-14)NO (21-22)NC |

| | |
|--------------------|--------|
| Net weight | 1.9 kg |
| Compatibility code | XY2CED |





Environment

| | |
|---------------------------------------|---|
| Standards | EN/IEC 60204-1 EN/IEC 60947-5-5 EN/ISO 13850 CSA C22.2 No 14 Work equipment directive 2009/104/EC Machinery directive 2006/42/EC UL 508 EN/IEC 60947-5-1 |
| Product certifications | UL category NISD emergency stop devices CSA CCC EAC |
| Protective treatment | TC |
| Ambient air temperature for operation | -25...70 °C |
| Ambient air temperature for storage | -40...70 °C |
| Vibration resistance | 10 gn (f= 10...300 Hz) conforming to EN/IEC 60068-2-6 |
| Shock resistance | 50 gn 11 ms conforming to EN/IEC 60068-2-27 |
| IP degree of protection | IP66 conforming to IEC 60529 |

Packing Units

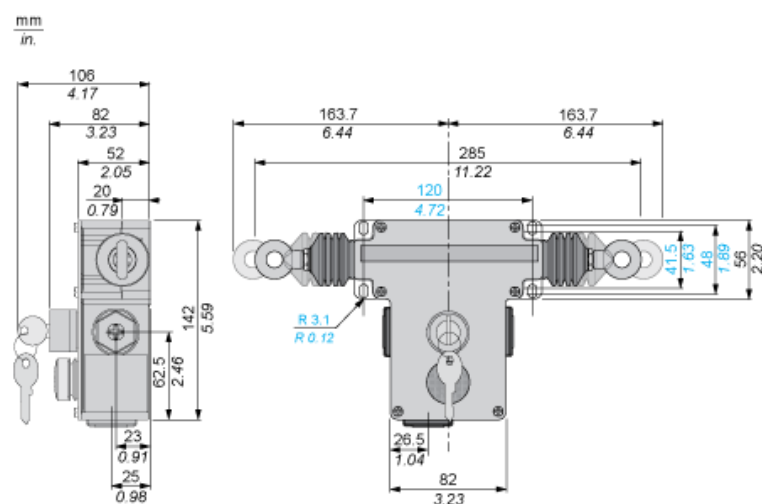
| | |
|------------------|----------|
| Package 1 Weight | 1.900 kg |
| Package 1 Height | 1.020 dm |
| Package 1 width | 1.590 dm |
| Package 1 Length | 3.090 dm |

Offer Sustainability

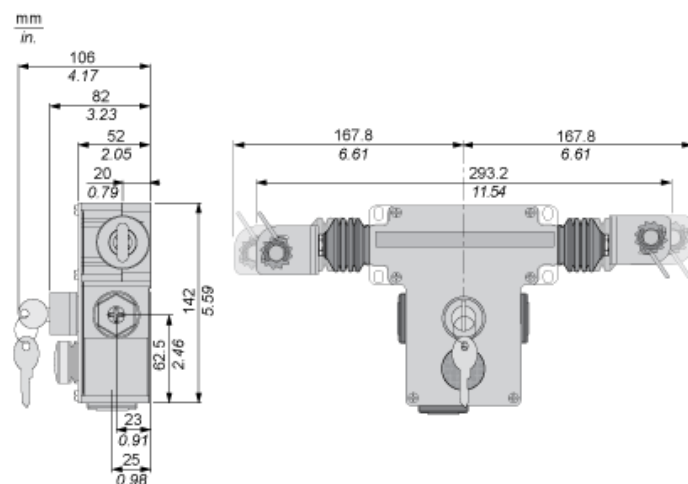
| | |
|----------------------------|--|
| Sustainable offer status | Green Premium product |
| REACH Regulation |  REACH Declaration |
| EU RoHS Directive | Pro-active compliance (Product out of EU RoHS legal scope)  EU RoHS Declaration |
| Mercury free | Yes |
| RoHS exemption information |  Yes |
| Environmental Disclosure |  Product Environmental Profile |

Dimensions

Without Tensioner



With Tensioners



Electrical Curves

AC Supply 50/60 Hz. Inductive Circuit

2-pole Contact Block



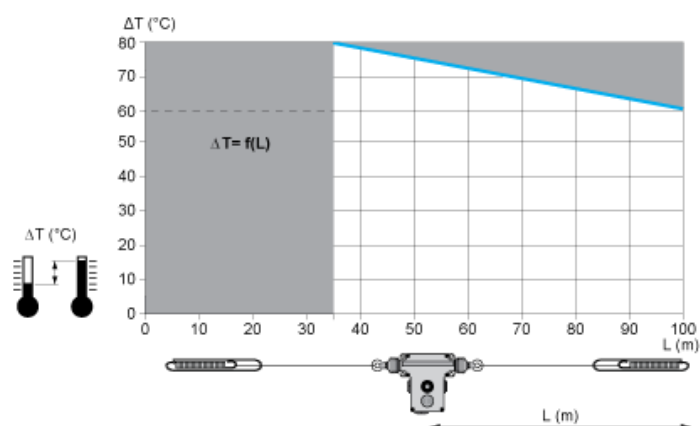
(y) Millions of operating cycles
(x) Current in A

DC Supply. Power Broken in W for 1 Million Operating Cycles. Inductive Circuit

| | | | | |
|---------|---|----|----|-----|
| Voltage | V | 24 | 48 | 120 |
| Power | W | 13 | 9 | 7 |

Mounting and Clearance

Adjustment Values (With End Spring)



In Prohibited zone
grey :