



Model Number

SLA29/73c

with 4-pin, M12 connector

Features

- Sensing range up to 30 m
- Self-monitoring (type 4 according to IEC/EN 61496-1)
- Red transmission light
- Integrated alignment aid
- Clearly visible LED functional display and pre-fault indicator on the receiver
- Sturdy housing
- Waterproof, degree of protection IP67
- Operation on SB4-series control units (SafeBox)

Accessories

OMH-05

Mounting aid for round steel \varnothing 12 mm or sheet 1.5 mm ... 3 mm

OMH-21

Mounting bracket

OMH-22

Mounting bracket

OMH-MLV11-K

dove tail mounting clamp

MS SLP/SLA28

Fixing plate

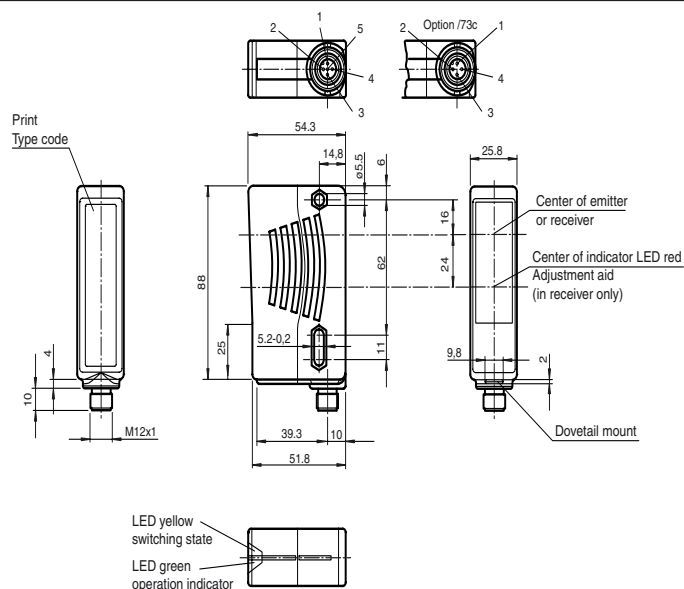
MS SLPCM

Mounting bracket

SLA-1-M

Additional accessories can be found in the Internet.

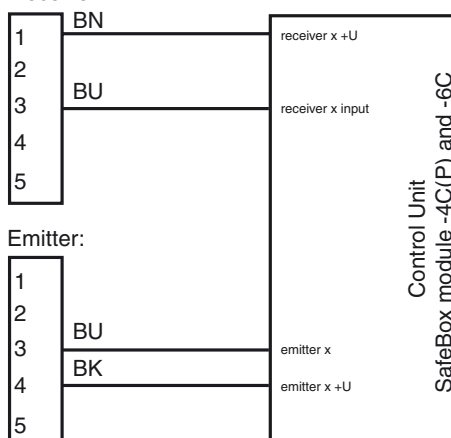
Dimensions



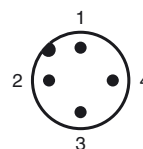
Electrical connection

Design with connector

Receiver:



Pinout



Technical data

System components

Emitter	SLA29-T/73c
Receiver	SLA29-R/73c

General specifications

Effective detection range	0.2 ... 30 m
Threshold detection range	40 m
Light source	LED
Light type	modulated visible red light
Target size	static: 30 mm dynamic: 40 mm (at $v = 1.6$ m/s of the obstacle)
Alignment aid	LED red in receiver
Angle of divergence	$< 5^\circ$

Functional safety related parameters

Safety Integrity Level (SIL)	SIL 3
Performance level (PL)	PL e
Category	Cat. 4
Mission Time (T_M)	20 a
PFH_d	4.4 E-10
Type	4

Indicators/operating means

Operation indicator	LED green
Function indicator	LED yellow: 1. LED lit constantly: signal $> 2 \times$ switching point (function reserve) 2. LED flashes: signal between $1 \times$ switching point and $2 \times$ switching point 3. LED off: signal $<$ switching point

Electrical specifications

Operating voltage	U_B	Power supply via control unit
-------------------	-------	-------------------------------

Conformity

Functional safety	ISO 13849-1
Product standard	EN 61496-1 ; IEC 61496-2

Ambient conditions

Ambient temperature	-20 ... 60 °C (-4 ... 140 °F)
Storage temperature	-20 ... 70 °C (-4 ... 158 °F)
Relative humidity	max. 95 %, not condensing

Mechanical specifications

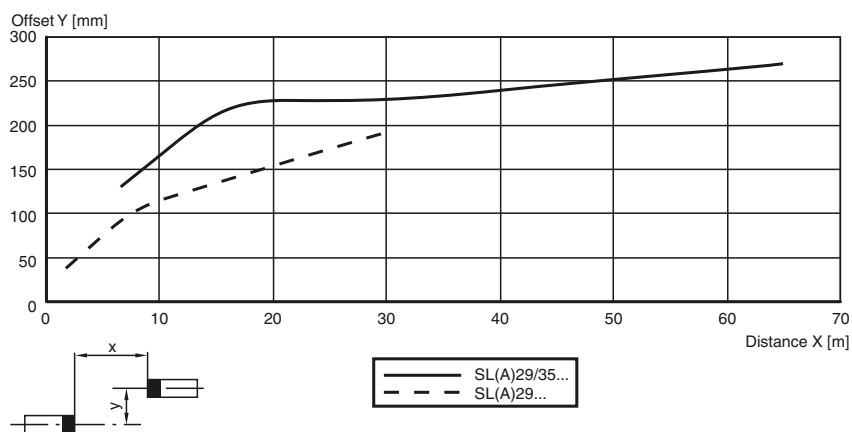
Degree of protection	IP67 according to EN 60529
Connection	M12 connector, 4-pin
Material	
Housing	ABS plastic, RLA 1021 (yellow) painted
Optical face	Plastic pane
Mass	per device 70 g

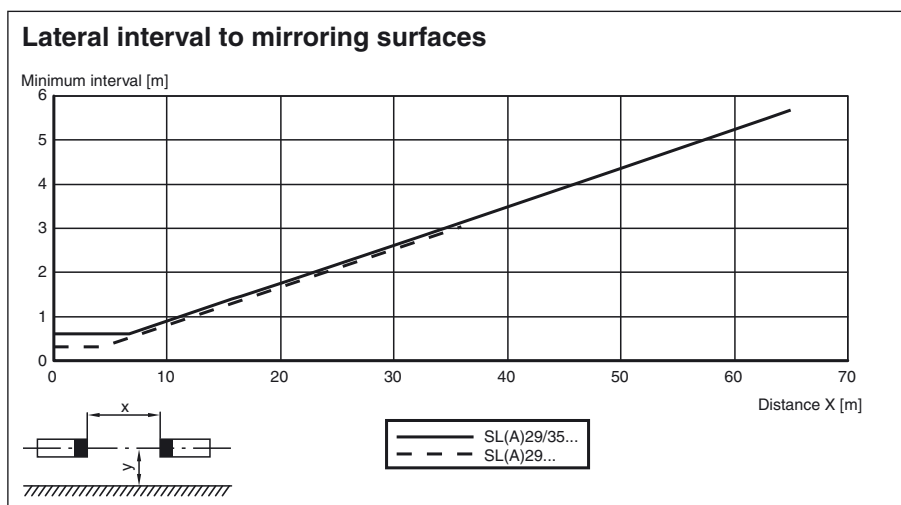
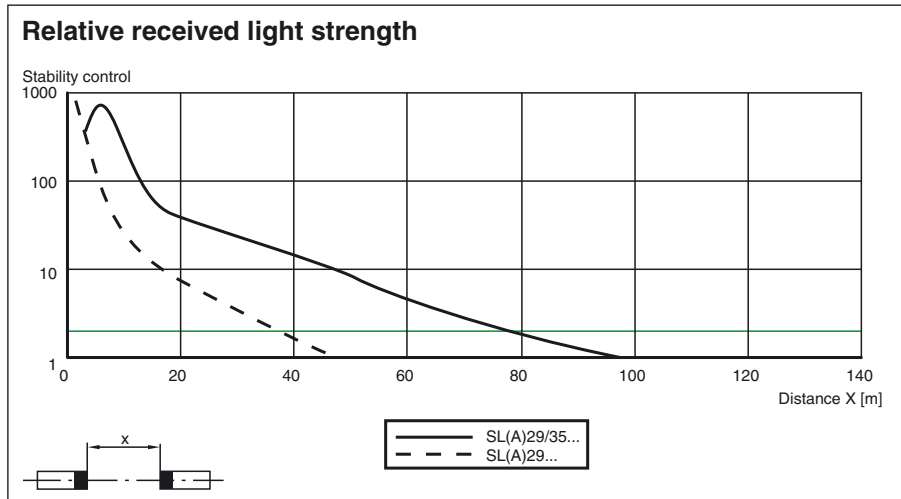
Approvals and certificates

CE conformity	CE
CCC approval	CCC approval / marking not required for products rated ≤ 36 V
Approvals	TÜV

Curves/Diagrams

Characteristic response curve





Additional information

For much easier alignment even for long distance applications, an additional red LED is located in the receiver's optics:

- LED constantly illuminated:
signal strength < switching level
- LED flashes:
signal strength is between 1-fold switching level and 2-fold switching level
- LED off:
signal strength \geq 2-fold switching level (function reserve)

System accessories

Control units

SC4-2
SB4 (SafeBox)

Cable sockets

Option /73c:

straight: V1-G-2M-PVC
V1-G-5M-PVC
V1-G-10M-PVC
angled: V1-W-2M-PVC
V1-W-5M-PVC
V1-W-10M-PVC

Option /105:



straight: V15-G-2M-PVC
V15-G-5M-PVC
V15-G-10M-PVC
angled: V15-W-2M-PVC
V15-W-5M-PVC
V15-W-10M-PVC

Option /116: no

Mounting aids

OMH-21
OMH-22
OMH-05
OMH-MLV11-K

Further accessories

Laser alignment aid
BA SLA28

Muting Set
MS SLP/SLA28

Redirection mirror
SLA-1-M