



TX 064-03Y

- Metal enclosure
- 3 or 4 Contacts
- 2 cable entries M 25 x 1.5
- 184 mm x 111 mm x 149 mm (basic component)
- Actuator heads can be repositioned by 4 x 90°

Data

Ordering data

	TX 064-03Y
	101057484
eCl@ss number, Version 9.0	27-27-06-01

General data

Product name	064 offset roller lever X EN 60947-5-1
Active principle	mechanical
Slide form	Castor
Enclosure material	Grey cast iron, galvanised
Enclosure coating material	painted
Material of the contacts, electrical	Silver
Roller material	Plastic
Gross weight	3,570 g

General data - Features

Number of openers	3
-------------------	---

Safety appraisal - Safety outputs

B10d Normally-closed contact (NC)	2,000,000 Operations
-----------------------------------	----------------------

Mechanical data

Actuating element	Offset roller lever
Mechanical life, minimum	1,000,000 Operations

Actuating angle, from left of switch axis	30 °
Actuating angle, from right of switch axis	45 °
Contact opening	2 x 4 mm
Actuating speed, minimum	600 mm/min
Actuating speed, maximum	1 m/s
Note (Actuating speed)	Actuating speed with vertical actuating angle to switch axis

Mechanical data - Connection technique

Terminal Connector	Screw connection 1.5 mm ² 4 mm ²
Note (Cable section)	All indications about the cable section are including the conductor ferrules.
Wire cross-section	11 AWG

Mechanical data - Dimensions

Height of sensor	107 mm
Length of sensor	149 mm
Width of Castor	6.5 mm
Diameter of Castor	25 mm

Ambient conditions

Protection class	IP 65 to IEC/EN 60529
Ambient temperature, minimum	-30 °C
Ambient temperature, maximum	+90 °C

Ambient conditions - Insulation value

Rated impulse withstand voltage	6 kV
---------------------------------	------

Electrical data

Thermal test current	25 A
Utilisation category AC-15	400 VAC
Utilisation category AC-15	25 A
Switching element	Opener (NC)
Note (Switching element)	with double break galvanically separated contact bridges
Switching principle	Creep circuit element
Switching frequency	1,000 /h

Notes

Note (General) Actuation from the right should be avoided, since this reduces the mechanical life of the position switch.

Ordering code

Product type description:

T(1) 064-(2)Y-(3)

(1)

S Plunger S

J Offset roller lever J

X Offset roller lever X

(2)

03 3 NC contact

12 1 NO contact/2 NC contacts

21 2 NO contacts/1 NC contact

30 3 NO contacts

04 4 NC contact

13 1 NO contacts/3 NC contact

22 2 NO contacts/2 NC contact

31 3 NO contacts/1 NC contact

40 4 NO contacts

(3)

UE Slow action with overlapping contacts

H Slow action with staggered contacts

R Latching 2 x 45°

Pictures

Photo/Product/Catalogue



ID: ktm-xf01

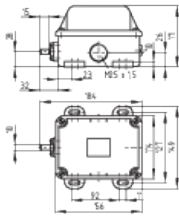
| 25,1 kB | .png | 74.083 x 82.197 mm - 210 x 233

Pixel - 72 dpi

| 231,1 kB | .jpg | 352.425 x 391.583 mm - 999 x 1110

Pixel - 72 dpi

Dimension/Product/Basic



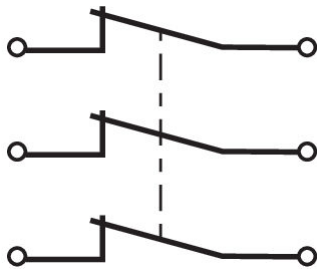
ID: 1t-64g01

| 8,9 kB | .png | 74.083 x 51.858 mm - 210 x 147 Pixel - 72 dpi

| 103,5 kB | .jpg | 352.778 x 247.297 mm - 1000 x 701 Pixel - 72 dpi

| 33,2 kB | .cdr |

Graphic/Product/Contact

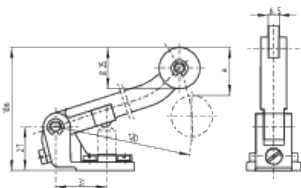


ID: k3o--k02

| 65,3 kB | .jpg | 352.778 x 292.806 mm - 1000 x 830 Pixel - 72 dpi

| 18,7 kB | .cdr |

Dimension/Product/Actuator



ID: 1tm-xb01

| 111,3 kB | .jpg | 352.778 x 244.475 mm - 1000 x 693 Pixel - 72 dpi

| 11,2 kB | .png | 74.083 x 51.153 mm - 210 x 145 Pixel - 72 dpi

Illustration/Product/Function



ID: 235rz03

| 131,9 kB | .jpg | 352.778 x 773.642 mm - 1000 x 2193 Pixel - 72 dpi

| 15,5 kB | .cdr |

| 2,7 kB | .png | 74.083 x 162.278 mm - 210 x 460 Pixel - 72 dpi

K.A. Schmersal GmbH & Co. KG, Möddinghofe 3, D-42279 Wuppertal

The details and data referred to have been carefully checked. Images may diverge from original. Further technical data can be found in the manual. Technical amendments and errors possible.

Generated on 542021-01-31T16:12:54+01:000401Europe/BerlinSun, 31 Jan 2021 16:12:54

+010054pmSunday.31pm31Europe/BerlinCET1201Europe/BerlinJanuary2021Sun, 31 Jan 2021 16:12:54

+010001pm31