

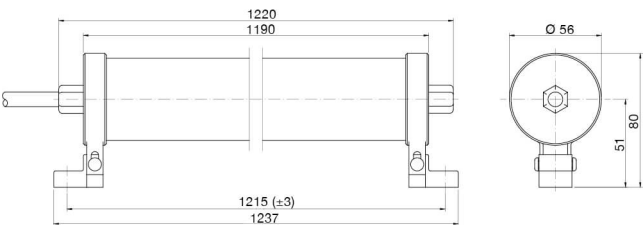


Indicative image



**LIGHT CURTAINS TYPE 2 ACCORDING TO IEC 61496-1 AND 2**

- Compact housing (28 x 30 mm) and no dead zone on cap side
- Resolution 30, 40, 50, 90 mm for hand protection and presence control and 2, 3, 4 beams for body protection/access control
- Controlled distance up to: 3, 4, 10, 12 m
- Base, Standard versions and Master, Slave version to connect up to 3 sets in cascade configuration
- Selectable Automatic/Manual Restart and EDM integrated functions (Standard models)
- Selectable controlled distance
- IP69K protection models (LS2\_K) and models with integrated heating system to reach -25°C operating temperature (LS2\_H)
- Standard M12 da 5 and 8 poles connectors



**Detection properties**

Nominal sensing distance	≤ 10m
Resolution	30mm
controlled height	1060mm
number of rays	53
Effective Aperture Angle	±5°

**Application**

Function Principle	Emitter + Receiver
--------------------	--------------------

Available functions	Manual/Automatic Restart, EDM
---------------------	-------------------------------

#### Safety parameters

Type	2
SIL	1
SILCL	1
PL	c
PFHd	5,83E-08
Dcavg	90,50%
MTTFd	100
CFF	80%

#### Outputs

Output type	2 x PNP-NO (OSSD safety output)
Response time	14,5ms

#### Electrical data

Operating Voltage	19,2 ... 28,8 Vcc
Load current	≤ 400mA
Time delay before availability	2s
Interference to external light	according to IEC 61496-2
Power Consumption - Receiver	2W (no load)
Power Consumption - Emitter	1W
Power Consumption - Heater	2 ... 10W
Equivalent Resistive Load	≥ 60 Ω
Capacitive Load	≥ 0,82 μF
Cabel Length (Power Supply/Output)	≤ 100m
Cable Length for Master Slave Interconnections	≤ 50m

#### Mechanical data

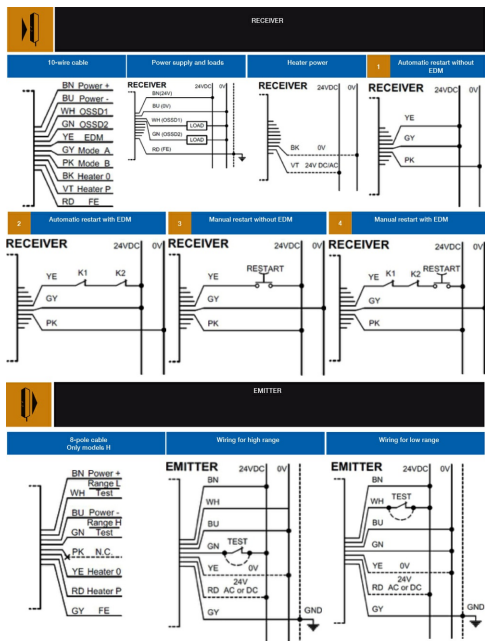
Dimensions	Ø 56mm
Connections	Cable 8 wires (emitter) Cable 10 wires (receiver)
Operating temperature	-25°C ÷ +55°C (no condensation)
Storage temperature	-25°C ÷ +70°C (no condensation)
humidity	95% (no condensation)

#### Test/Approvals

Approvals	CE, cULus, TÜV
EMC compatibility	According to 2014/30/EU Directive
Shocks and vibrations	according to IEC 61496-1

Degree of protection	IP65, IP67, IP69K
<b>Accessories</b>	
Supplied Accessories	Support brackets
<b>Generical Data</b>	
Dimensions	Ø 56mm
Operating Temperature	-25°C ÷ +55°C (no condensation)
Humidity	95% (no condensation)
Mechanical Protection	IP65, IP67, IP69K

# ELECTRICAL DIAGRAMS OF THE CONNECTIONS



## Datasensing S.r.l.

Strada S.Caterina, 235  
41122 Modena (MO)  
Tel. 059 420411  
Fax 059 253973  
E-mail [info@datasensing.com](mailto:info@datasensing.com)

## date of printing

29/04/2022 16:10:18