

Plastic square shape photoelectric sensors PSE series



Features

- Universal housing, an ideal replacement for a wide range of sensor types;
- IP67, suitable for harsh environments;
- One-click distance setting, accurate and fast;
- Background suppression type, stable detection of both white and black targets;
- Visible light spots for easy installation and commissioning.



Model

NPN NO/NC

PSE-YC35DNBR-E3

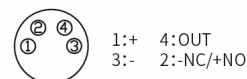
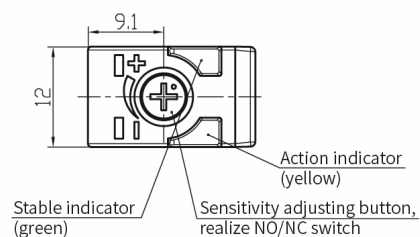
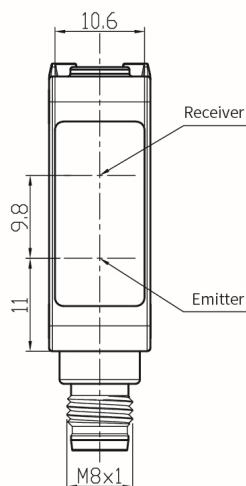
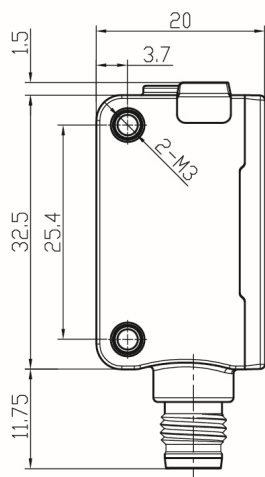
PNP NO/NC

PSE-YC35DPBR-E3

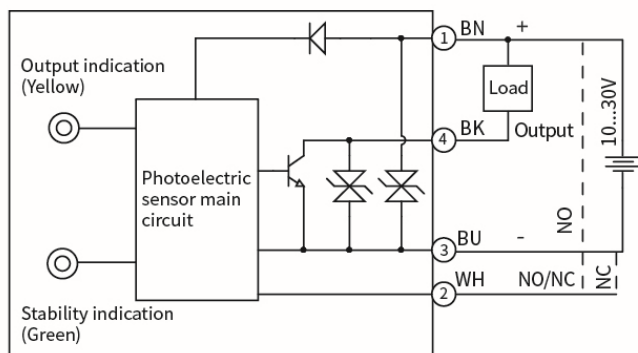
Specifications

Detection type	Background reflection	Indicator	Green light: power, stable signal (unstable signal flash)
Rated distance	35cm		Yellow light: output, overload or short circuit (flash)
Output	NPN NO/NC or PNP NO/NC	Anti-ambient light	Anti-sunlight interference $\leq 10,000\text{lux}$;
Distance adjustment	5-turn knob adjustable		Incandescent light interference $\leq 3,000\text{lux}$
Response time	$\leq 0.5\text{ms}$	Operating temperature	$-25^{\circ}\text{C} \dots 55^{\circ}\text{C}$
Spot size	10mm@35cm	Storage temperature	$-25^{\circ}\text{C} \dots 70^{\circ}\text{C}$
Hysteresis range	$< 5\%$	Protection degree	IP67
Supply voltage	10...30 VDC	Certification	CE
Consumption current	$\leq 20\text{mA}$	Production standard	EN60947-5-2:2012, IEC60947-5-2:2012
Load current	$\leq 100\text{mA}$	Material	Housing: PC+ABS; Filter: PMMA
Voltage drop	$\leq 1\text{V}$	Weight	10g
Light source	Red light (640nm)	Connection	M8 connector
Circuit protection	Short-circuit, overload, reverse polarity and zener protection		
NO/NC adjustment	The status of white wire connected to the negative is NC, while connected to the positive hanging is NO.		

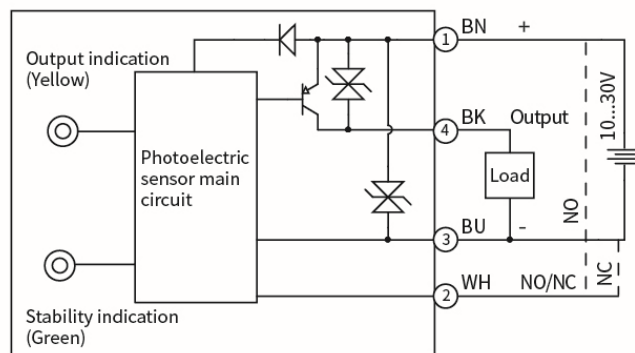
Dimensions



Circuit Diagrams



NPN



PNP